

Datasheet for ABIN633267
anti-EXOSC3 antibody (Middle Region)



[Go to Product page](#)

2 Images

Overview

Quantity:	100 µL
Target:	EXOSC3
Binding Specificity:	Middle Region
Reactivity:	Human, Mouse, Rat, Dog
Host:	Rabbit
Clonality:	Polyclonal
Conjugate:	This EXOSC3 antibody is un-conjugated
Application:	Western Blotting (WB), Immunohistochemistry (IHC)

Product Details

Immunogen:	EXOSC3 antibody was raised using the middle region of EXOSC3 corresponding to a region with amino acids TKCGRLRHKEPGSGSGGGVYWVDSQQKRYVPVKGDHVGIVTAKSGDIFK
Specificity:	EXOSC3 antibody was raised against the middle region of EXOSC3
Purification:	Affinity purified

Target Details

Target:	EXOSC3
Alternative Name:	EXOSC3 (EXOSC3 Products)
Background:	EXOSC3 is component of the exosome 3'->5' exoribonuclease complex and is required for the 3' processing of the 7S pre-RNA to the mature 5.8S rRNA.

Target Details

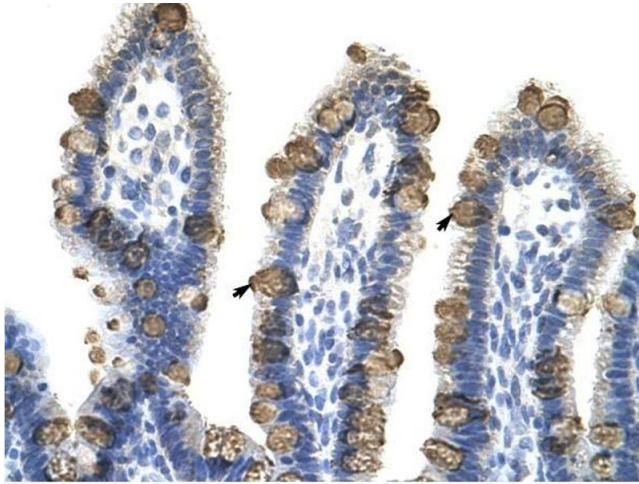
Molecular Weight:	30 kDa (MW of target protein)
Pathways:	Regulation of Leukocyte Mediated Immunity , Positive Regulation of Immune Effector Process , Production of Molecular Mediator of Immune Response , SARS-CoV-2 Protein Interactome

Application Details

Application Notes:	WB: 1 µg/mL, IHC: 4-8 µg/mL Optimal conditions should be determined by the investigator.
Comment:	EXOSC3 Blocking Peptide, catalog no. 33R-9133, is also available for use as a blocking control in assays to test for specificity of this EXOSC3 antibody
Restrictions:	For Research Use only

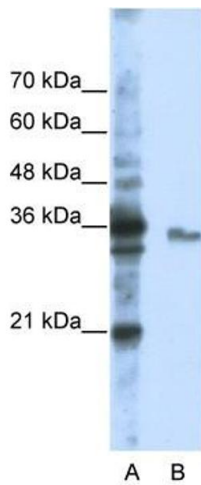
Handling

Format:	Lyophilized
Reconstitution:	Lyophilized powder. Add distilled water for a 1 mg/mL concentration of EXOSC3 antibody in PBS
Concentration:	Lot specific
Buffer:	PBS
Handling Advice:	Avoid repeated freeze/thaw cycles. Dilute only prior to immediate use.
Storage:	4 °C/-20 °C
Storage Comment:	Store at 2-8 °C for short periods. For longer periods of storage, store at -20 °C.



Immunohistochemistry

Image 1. EXOSC3 antibody was used for immunohistochemistry at a concentration of 4-8 ug/ml to stain Epithelial cells of intestinal villus (arrows) in Human Intestine. Magnification is at 400X



Western Blotting

Image 2. EXOSC3 antibody used at 1 ug/ml to detect target protein.