

Datasheet for ABIN633274 **anti-SNRPD1 antibody (N-Term)**



[Go to Product page](#)

2 Images

Overview

Quantity:	100 µL
Target:	SNRPD1
Binding Specificity:	N-Term
Reactivity:	Human, Mouse, Rat, Dog
Host:	Rabbit
Clonality:	Polyclonal
Conjugate:	This SNRPD1 antibody is un-conjugated
Application:	Western Blotting (WB), Immunohistochemistry (IHC)

Product Details

Immunogen:	SNRPD1 antibody was raised using the N terminal of SNRPD1 corresponding to a region with amino acids NGTQVHGTTGVDVSMNTHLKAVKMTLKNREPVQLETLSIRGNNIRYFIL
Specificity:	SNRPD1 antibody was raised against the N terminal of SNRPD1
Purification:	Affinity purified

Target Details

Target:	SNRPD1
Alternative Name:	SNRPD1 (SNRPD1 Products)
Background:	SNRPD1 is a small nuclear ribonucleoprotein that belongs to the SNRNP core protein family. The protein may act as a charged protein scaffold to promote SNRNP assembly or strengthen SNRNP-SNRNP interactions through nonspecific electrostatic contacts with RNA.

Target Details

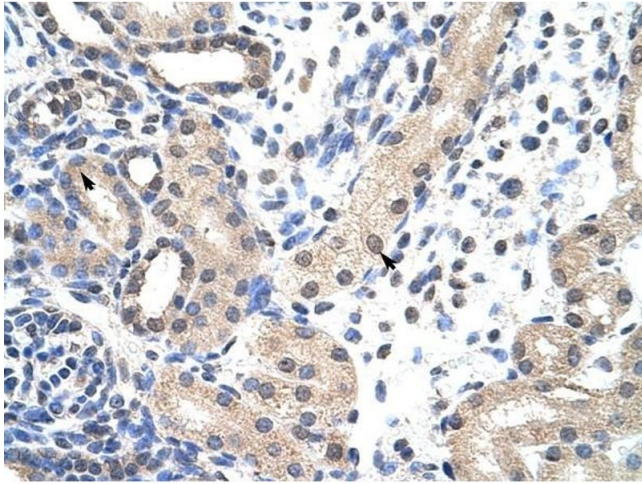
Molecular Weight:	13 kDa (MW of target protein)
Pathways:	Ribonucleoprotein Complex Subunit Organization

Application Details

Application Notes:	WB: 0.25 µg/mL, IHC: 4-8 µg/mL Optimal conditions should be determined by the investigator.
Comment:	SNRPD1 Blocking Peptide, catalog no. 33R-6711, is also available for use as a blocking control in assays to test for specificity of this SNRPD1 antibody
Restrictions:	For Research Use only

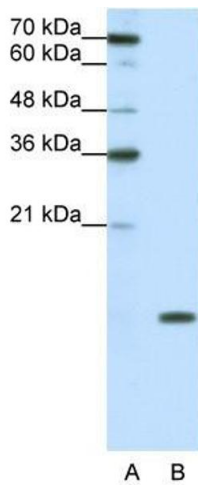
Handling

Format:	Lyophilized
Reconstitution:	Lyophilized powder. Add distilled water for a 1 mg/mL concentration of SNRPD1 antibody in PBS
Concentration:	Lot specific
Buffer:	PBS
Handling Advice:	Avoid repeated freeze/thaw cycles. Dilute only prior to immediate use.
Storage:	4 °C/-20 °C
Storage Comment:	Store at 2-8 °C for short periods. For longer periods of storage, store at -20 °C.



Immunohistochemistry

Image 1. SNRPD1 antibody was used for immunohistochemistry at a concentration of 4-8 ug/ml to stain Epithelial cells of renal tubule (arrows) in Human Kidney. Magnification is at 400X



Western Blotting

Image 2. SNRPD1 antibody used at 0.25 ug/ml to detect target protein.