

## Datasheet for ABIN633275 **anti-KRR1 antibody (C-Term)**



[Go to Product page](#)

### 1 Image

#### Overview

Quantity:	100 µL
Target:	KRR1
Binding Specificity:	C-Term
Reactivity:	Human
Host:	Rabbit
Clonality:	Polyclonal
Conjugate:	This KRR1 antibody is un-conjugated
Application:	Western Blotting (WB)

#### Product Details

Immunogen:	KRR1 antibody was raised using the C terminal of KRR1 corresponding to a region with amino acids KANQKKRQKMEAIKAKQAEAIKSRQEERNKAFIPPKEKPIVKPKEASTET
Specificity:	KRR1 antibody was raised against the C terminal of KRR1
Purification:	Affinity purified

#### Target Details

Target:	KRR1
Alternative Name:	KRR1 ( <a href="#">KRR1 Products</a> )
Background:	KRR1 belongs to the KRR1 family. It contains 1 KH domain. KRR1 is required for 40S ribosome biogenesis. It is involved in nucleolar processing of pre-18S ribosomal RNA and ribosome assembly.

## Target Details

---

Molecular Weight: 44 kDa (MW of target protein)

## Application Details

---

Application Notes: WB: 1 µg/mL  
Optimal conditions should be determined by the investigator.

Comment: KRR1 Blocking Peptide, catalog no. 33R-4253, is also available for use as a blocking control in assays to test for specificity of this KRR1 antibody

Restrictions: For Research Use only

## Handling

---

Format: Lyophilized

Reconstitution: Lyophilized powder. Add distilled water for a 1 mg/mL concentration of KRR1 antibody in PBS

Concentration: Lot specific

Buffer: PBS

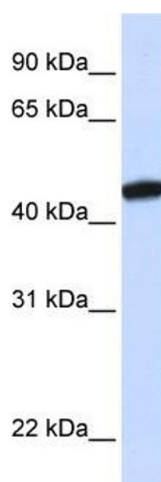
Handling Advice: Avoid repeated freeze/thaw cycles.  
Dilute only prior to immediate use.

Storage: 4 °C/-20 °C

Storage Comment: Store at 2-8 °C for short periods. For longer periods of storage, store at -20 °C.

## Images

---



### Western Blotting

**Image 1.** KRR1 antibody used at 1 ug/ml to detect target protein.