

Datasheet for ABIN633279

**anti-Pre-mRNA Branch Site Protein p14 (SF3B14) (N-Term)  
antibody**[Go to Product page](#)**1** Image

## Overview

Quantity:	100 µL
Target:	Pre-mRNA Branch Site Protein p14 (SF3B14)
Binding Specificity:	N-Term
Reactivity:	Human, Mouse
Host:	Rabbit
Clonality:	Polyclonal
Conjugate:	Un-conjugated
Application:	Western Blotting (WB)

## Product Details

Immunogen:	SF3 B14 antibody was raised using the N terminal of SF3 14 corresponding to a region with amino acids MAMQAAKRANIRLPPEVNRILYIRNLPYKITAEMYDIFGKYGPIRQIRV
Specificity:	SF3 B14 antibody was raised against the N terminal of SF3 14
Purification:	Affinity purified

## Target Details

Target:	Pre-mRNA Branch Site Protein p14 (SF3B14)
Alternative Name:	SF3B14 ( <a href="#">SF3B14 Products</a> )
Background:	SF3B14 is a 14 kDa protein subunit of the splicing factor 3b complex. Splicing factor 3b associates with both the U2 and U11/U12 small nuclear ribonucleoprotein complexes (U2 snRNP) of spliceosomes. This 14 kDa protein interacts directly with subunit 1 of the splicing

## Target Details

---

factor 3b complex. SF3B14 also interacts directly with the adenosine that carries out the first transesterification step of splicing at the pre-mRNA branch site.

Molecular Weight: 14 kDa (MW of target protein)

## Application Details

---

Application Notes: WB: 1 µg/mL  
Optimal conditions should be determined by the investigator.

Comment: SF3B14 Blocking Peptide, catalog no. 33R-5703, is also available for use as a blocking control in assays to test for specificity of this SF3B14 antibody

Restrictions: For Research Use only

## Handling

---

Format: Lyophilized

Reconstitution: Lyophilized powder. Add distilled water for a 1 mg/mL concentration of SF0 14 antibody in PBS

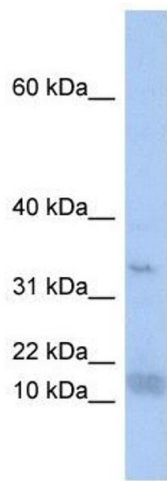
Concentration: Lot specific

Buffer: PBS

Handling Advice: Avoid repeated freeze/thaw cycles.  
Dilute only prior to immediate use.

Storage: 4 °C/-20 °C

Storage Comment: Store at 2-8 °C for short periods. For longer periods of storage, store at -20 °C.



### Western Blotting

**Image 1.** SF3B14 antibody used at 1 ug/ml to detect target protein.