

Datasheet for ABIN633281  
**anti-RBM28 antibody (C-Term)**



[Go to Product page](#)

3 Images

## Overview

Quantity:	100 µL
Target:	RBM28
Binding Specificity:	C-Term
Reactivity:	Human, Mouse, Dog
Host:	Rabbit
Clonality:	Polyclonal
Conjugate:	This RBM28 antibody is un-conjugated
Application:	Western Blotting (WB), Immunohistochemistry (IHC)

## Product Details

Immunogen:	RBM28 antibody was raised using the C terminal of RBM28 corresponding to a region with amino acids QTKAEVEQVELPDGKKRRKVLALPSHRGPKIRLRDKGKVKPVHPKPKPKQ
Specificity:	RBM28 antibody was raised against the C terminal of RBM28
Purification:	Affinity purified

## Target Details

Target:	RBM28
Alternative Name:	RBM28 ( <a href="#">RBM28 Products</a> )
Background:	RBM28 protein may be a specific nucleolar component of the spliceosomal snRNPs.
Molecular Weight:	83 kDa (MW of target protein)

## Target Details

Pathways: [SARS-CoV-2 Protein Interactome](#)

## Application Details

Application Notes:	WB: 0.5 µg/mL, IHC: 4-8 µg/mL Optimal conditions should be determined by the investigator.
Comment:	RBM28 Blocking Peptide, catalog no. 33R-7754, is also available for use as a blocking control in assays to test for specificity of this RBM28 antibody
Restrictions:	For Research Use only

## Handling

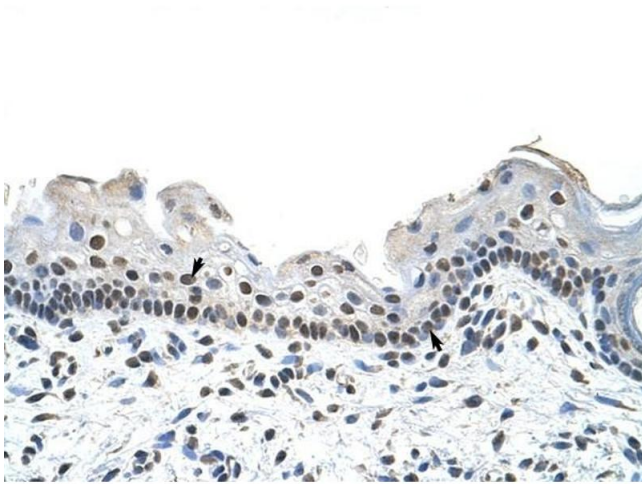
Format:	Lyophilized
Reconstitution:	Lyophilized powder. Add distilled water for a 1 mg/mL concentration of RBM28 antibody in PBS
Concentration:	Lot specific
Buffer:	PBS
Handling Advice:	Avoid repeated freeze/thaw cycles. Dilute only prior to immediate use.
Storage:	4 °C/-20 °C
Storage Comment:	Store at 2-8 °C for short periods. For longer periods of storage, store at -20 °C.

## Images



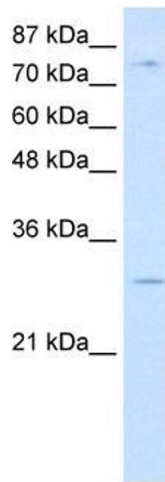
### Immunohistochemistry

**Image 1.** RBM28 antibody was used for immunohistochemistry at a concentration of 4-8 ug/ml to stain Myocardial cells (arrows) in Human Heart. Magnification is at 400X



### Immunohistochemistry

**Image 2.** RBM28 antibody was used for immunohistochemistry at a concentration of 4-8 ug/ml to stain Squamous epithelial cells (arrows) in Human Skin. Magnification is at 400X.



### Western Blotting

**Image 3.** RBM28 antibody used at 0.5 ug/ml to detect target protein.