

Datasheet for ABIN633283 anti-PAPOLG antibody



[Go to Product page](#)

1 Image

Overview

Quantity:	100 µL
Target:	PAPOLG
Reactivity:	Human, Mouse, Rat
Host:	Rabbit
Clonality:	Polyclonal
Conjugate:	This PAPOLG antibody is un-conjugated
Application:	Western Blotting (WB)

Product Details

Immunogen:	PAPOLG antibody was raised using a synthetic peptide corresponding to a region with amino acids SVDAIGGESMPIPTIDTSRKKRLPSKELPDSSSPVANNIRVIKNSIRLT
Purification:	Affinity purified

Target Details

Target:	PAPOLG
Alternative Name:	PAPOLG (PAPOLG Products)
Background:	PAPOLG is a member of the poly(A) polymerase family which catalyzes template-independent extension of the 3' end of a DNA/RNA strand. This enzyme shares 60% identity to the well characterized poly(A) polymerase II (PAPII) at the amino acid level. These two enzymes have similar organization of structural and functional domains. This enzyme is exclusively localized in the nucleus and exhibits both nonspecific and CPSF (cleavage and polyadenylation

Target Details

specificity factor)/AAUAAA-dependent polyadenylation activity.

Molecular Weight: 83 kDa (MW of target protein)

Application Details

Application Notes: WB: 1 µg/mL

Optimal conditions should be determined by the investigator.

Comment: PAPOLG Blocking Peptide, catalog no. 33R-8903, is also available for use as a blocking control in assays to test for specificity of this PAPOLG antibody

Restrictions: For Research Use only

Handling

Format: Lyophilized

Reconstitution: Lyophilized powder. Add distilled water for a 1 mg/mL concentration of PAPOLG antibody in PBS

Concentration: Lot specific

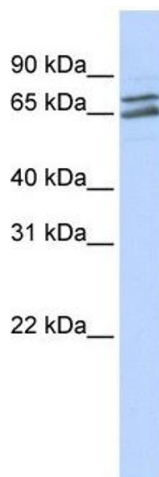
Buffer: PBS

Handling Advice: Avoid repeated freeze/thaw cycles.

Storage: 4 °C/-20 °C

Storage Comment: Store at 2-8 °C for short periods. For longer periods of storage, store at -20 °C.

Images



Western Blotting

Image 1. PAPOLG antibody used at 1 ug/ml to detect target protein.