

Datasheet for ABIN633285 **anti-RPL3 antibody (N-Term)**



[Go to Product page](#)

1 Image

Overview

Quantity:	100 µL
Target:	RPL3
Binding Specificity:	N-Term
Reactivity:	Human, Mouse, Rat
Host:	Rabbit
Clonality:	Polyclonal
Conjugate:	This RPL3 antibody is un-conjugated
Application:	Western Blotting (WB)

Product Details

Immunogen:	RPL3 antibody was raised using the N terminal of RPL3 corresponding to a region with amino acids DPSKPVHLTAFLGYKAGMTHIVREVDPRGSKVNKKEVVEAVTIVETPPMV
Specificity:	RPL3 antibody was raised against the N terminal of RPL3
Purification:	Affinity purified

Target Details

Target:	RPL3
Alternative Name:	RPL3 (RPL3 Products)
Background:	Ribosomes, the complexes that catalyze protein synthesis, consist of a small 40S subunit and a large 60S subunit. Together these subunits are composed of 4 RNA species and approximately 80 structurally distinct proteins. RPL3 is a ribosomal protein that is a component of the 60S

Target Details

subunit. The protein belongs to the L3P family of ribosomal proteins and it is located in the cytoplasm. The protein can bind to the HIV-1 TAR mRNA, and it has been suggested that the protein contributes to tat-mediated transactivation.

Molecular Weight: 46 kDa (MW of target protein)

Application Details

Application Notes: WB: 1 µg/mL
Optimal conditions should be determined by the investigator.

Comment: RPL3 Blocking Peptide, catalog no. 33R-2116, is also available for use as a blocking control in assays to test for specificity of this RPL3 antibody

Restrictions: For Research Use only

Handling

Format: Lyophilized

Reconstitution: Lyophilized powder. Add distilled water for a 1 mg/mL concentration of RPL3 antibody in PBS

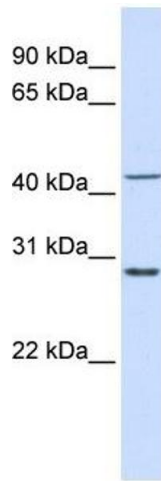
Concentration: Lot specific

Buffer: PBS

Handling Advice: Avoid repeated freeze/thaw cycles.
Dilute only prior to immediate use.

Storage: 4 °C/-20 °C

Storage Comment: Store at 2-8 °C for short periods. For longer periods of storage, store at -20 °C.



Western Blotting

Image 1. RPL3 antibody used at 1 ug/ml to detect target protein.