

Datasheet for ABIN633286 **anti-RPL3 antibody (C-Term)**



[Go to Product page](#)

1 Image

Overview

| | |
|----------------------|-------------------------------------|
| Quantity: | 100 µL |
| Target: | RPL3 |
| Binding Specificity: | C-Term |
| Reactivity: | Human, Mouse, Rat |
| Host: | Rabbit |
| Clonality: | Polyclonal |
| Conjugate: | This RPL3 antibody is un-conjugated |
| Application: | Western Blotting (WB) |

Product Details

| | |
|---------------|---|
| Immunogen: | RPL3 antibody was raised using the C terminal of RPL3 corresponding to a region with amino acids YHHRTEINKKIYKIGQGYLIKDGKLIKNNASTDYDLSDKSINPLGGFVHY |
| Specificity: | RPL3 antibody was raised against the C terminal of RPL3 |
| Purification: | Affinity purified |

Target Details

| | |
|-------------------|---|
| Target: | RPL3 |
| Alternative Name: | RPL3 (RPL3 Products) |
| Background: | Ribosomes, the complexes that catalyze protein synthesis, consist of a small 40S subunit and a large 60S subunit. Together these subunits are composed of 4 RNA species and approximately 80 structurally distinct proteins. RPL3 is a ribosomal protein that is a component of the 60S |

Target Details

subunit. The protein belongs to the L3P family of ribosomal proteins and it is located in the cytoplasm. The protein can bind to the HIV-1 TAR mRNA, and it has been suggested that the protein contributes to tat-mediated transactivation.

Molecular Weight: 40 kDa (MW of target protein)

Application Details

Application Notes: WB: 1 µg/mL
Optimal conditions should be determined by the investigator.

Comment: RPL3 Blocking Peptide, catalog no. 33R-10124, is also available for use as a blocking control in assays to test for specificity of this RPL3 antibody

Restrictions: For Research Use only

Handling

Format: Lyophilized

Reconstitution: Lyophilized powder. Add distilled water for a 1 mg/mL concentration of RPL3 antibody in PBS

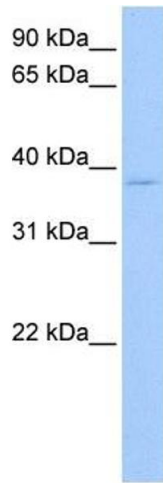
Concentration: Lot specific

Buffer: PBS

Handling Advice: Avoid repeated freeze/thaw cycles.
Dilute only prior to immediate use.

Storage: 4 °C/-20 °C

Storage Comment: Store at 2-8 °C for short periods. For longer periods of storage, store at -20 °C.



Western Blotting

Image 1. RPL3 antibody used at 1 ug/ml to detect target protein.