

Datasheet for ABIN633298  
**anti-SEPSECS antibody (N-Term)**



[Go to Product page](#)

2 Images

## Overview

Quantity:	100 µL
Target:	SEPSECS
Binding Specificity:	N-Term
Reactivity:	Human, Mouse, Rat, Dog
Host:	Rabbit
Clonality:	Polyclonal
Conjugate:	This SEPSECS antibody is un-conjugated
Application:	Western Blotting (WB), Immunohistochemistry (IHC)

## Product Details

Immunogen:	SLA/LP antibody was raised using the N terminal of SLA/LP corresponding to a region with amino acids MDSNNFLGNCVGEREGRVASALVARRHYRFIHGIGRSGDISAVQPKAAG
Specificity:	SLA/LP antibody was raised against the N terminal of SLA/LP
Characteristics:	Rabbit polyclonal SLA/LP antibody raised against the N terminal of SLA/LP
Purification:	Affinity purified

## Target Details

Target:	SEPSECS
Alternative Name:	SLA/LP ( <a href="#">SEPSECS Products</a> )
Target Type:	Antibody

## Target Details

---

Background:	SLA/LP converts O-phosphoserine-tRNA(Sec) to selenocysteinyl-tRNA(Sec) required for selenoprotein biosynthesis.
Molecular Weight:	49 kDa (MW of target protein)
Pathways:	<a href="#">SARS-CoV-2 Protein Interactome</a>

## Application Details

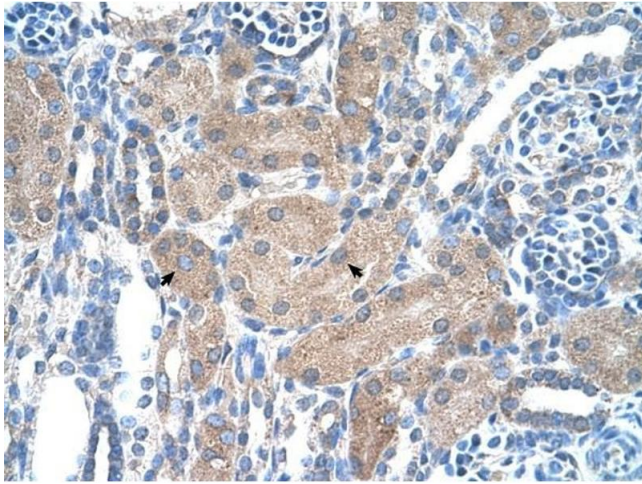
---

Application Notes:	WB: 1 µg/mL, IHC: 4-8 µg/mL Optimal conditions should be determined by the investigator.
Comment:	SLA/LP Blocking Peptide, catalog no. 33R-5871, is also available for use as a blocking control in assays to test for specificity of this SLA/LP antibody
Restrictions:	For Research Use only

## Handling

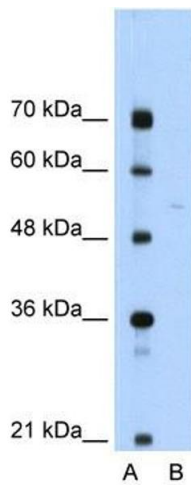
---

Format:	Lyophilized
Reconstitution:	Lyophilized powder. Add distilled water for a 1 mg/mL concentration of SLA/LP antibody in PBS
Concentration:	Lot specific
Buffer:	PBS
Handling Advice:	Avoid repeated freeze/thaw cycles. Dilute only prior to immediate use.
Storage:	4 °C/-20 °C
Storage Comment:	Store at 2-8 °C for short periods. For longer periods of storage, store at -20 °C.



### Immunohistochemistry

**Image 1.** SLA/LP antibody was used for immunohistochemistry at a concentration of 4-8 ug/ml to stain Epithelial cells of renal tubule (arrows) in Human Kidney. Magnification is at 400X



### Western Blotting

**Image 2.** SLA/LP antibody used at 1 ug/ml to detect target protein.