

Datasheet for ABIN633300
anti-RBM45 antibody (Middle Region)



[Go to Product page](#)

1 Image

Overview

Quantity:	100 µL
Target:	RBM45
Binding Specificity:	Middle Region
Reactivity:	Human, Rat
Host:	Rabbit
Clonality:	Polyclonal
Conjugate:	This RBM45 antibody is un-conjugated
Application:	Western Blotting (WB)

Product Details

Immunogen:	RBM45 antibody was raised using the middle region of RBM45 corresponding to a region with amino acids MRQEALGHEPRVNMFPFEQQSEFSSFDKNDSRGQEAIKRLSVVSRVPFT
Specificity:	RBM45 antibody was raised against the middle region of RBM45
Purification:	Affinity purified

Target Details

Target:	RBM45
Alternative Name:	RBM45 (RBM45 Products)
Background:	RBM45 is a RNA-binding protein with binding specificity for poly(C). It May play an important role in neural development. RBM45 contains 3 RRM (RNA recognition motif) domains.

Target Details

Molecular Weight: 53 kDa (MW of target protein)

Application Details

Application Notes: WB: 0.2-1 µg/mL
Optimal conditions should be determined by the investigator.

Comment: RBM45 Blocking Peptide, catalog no. 33R-6375, is also available for use as a blocking control in assays to test for specificity of this RBM45 antibody

Restrictions: For Research Use only

Handling

Format: Lyophilized

Reconstitution: Lyophilized powder. Add distilled water for a 1 mg/mL concentration of RBM45 antibody in PBS

Concentration: Lot specific

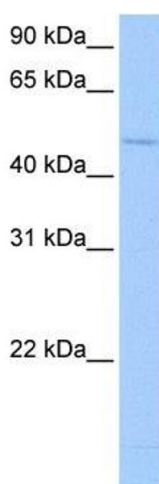
Buffer: PBS

Handling Advice: Avoid repeated freeze/thaw cycles.
Dilute only prior to immediate use.

Storage: 4 °C/-20 °C

Storage Comment: Store at 2-8 °C for short periods. For longer periods of storage, store at -20 °C.

Images



Western Blotting

Image 1. Western Blot showing RBM45 antibody used at a concentration of 1-2 µg/ml to detect its target protein.