

Datasheet for ABIN633313 **anti-RBMS2 antibody (N-Term)**



[Go to Product page](#)

1 Image

Overview

Quantity:	100 µL
Target:	RBMS2
Binding Specificity:	N-Term
Reactivity:	Human
Host:	Rabbit
Clonality:	Polyclonal
Conjugate:	This RBMS2 antibody is un-conjugated
Application:	Western Blotting (WB)

Product Details

Immunogen:	RBMS2 antibody was raised using the N terminal of RBMS2 corresponding to a region with amino acids MLLSVTSRPGISTFGYNRNNKKPYVSLAQQMAPPSPSNSTPNSSSGSNGN
Specificity:	RBMS2 antibody was raised against the N terminal of RBMS2
Purification:	Affinity purified

Target Details

Target:	RBMS2
Alternative Name:	RBMS2 (RBMS2 Products)
Background:	RBMS2 is a member of a small family of proteins which bind single stranded DNA/RNA. These proteins are characterized by the presence of two sets of ribonucleoprotein consensus sequence (RNP-CS) that contain conserved motifs, RNP1 and RNP2, originally described in RNA

Target Details

binding proteins, and required for DNA binding.

Molecular Weight: 44 kDa (MW of target protein)

Application Details

Application Notes: WB: 1 µg/mL

Optimal conditions should be determined by the investigator.

Comment: RBMS2 Blocking Peptide, catalog no. 33R-6197, is also available for use as a blocking control in assays to test for specificity of this RBMS2 antibody

Restrictions: For Research Use only

Handling

Format: Lyophilized

Reconstitution: Lyophilized powder. Add distilled water for a 1 mg/mL concentration of RBMS2 antibody in PBS

Concentration: Lot specific

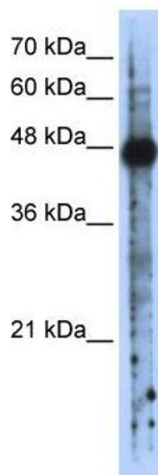
Buffer: PBS

Handling Advice: Avoid repeated freeze/thaw cycles.
Dilute only prior to immediate use.

Storage: 4 °C/-20 °C

Storage Comment: Store at 2-8 °C for short periods. For longer periods of storage, store at -20 °C.

Images



Western Blotting

Image 1. RBMS2 antibody used at 1 µg/ml to detect target protein.