

Datasheet for ABIN633316 **anti-MOV10L1 antibody**



[Go to Product page](#)

1 Image

Overview

Quantity:	100 µL
Target:	MOV10L1
Reactivity:	Human, Mouse, Rat
Host:	Rabbit
Clonality:	Polyclonal
Conjugate:	This MOV10L1 antibody is un-conjugated
Application:	Western Blotting (WB)

Product Details

Immunogen:	MOV10 L1 antibody was raised using a synthetic peptide corresponding to a region with amino acids LNVGQEVIHAVVEENKVSNGLKAIRVEAVSDKWEDDSRNLHGSPSDCGPRVL
Purification:	Affinity purified

Target Details

Target:	MOV10L1
Alternative Name:	MOV10L1 (MOV10L1 Products)
Background:	This gene is similar to a mouse gene that encodes a putative RNA helicase and shows testis-specific expression. Multiple transcript variants encoding different isoforms have been found for this gene.
Molecular Weight:	135 kDa (MW of target protein)

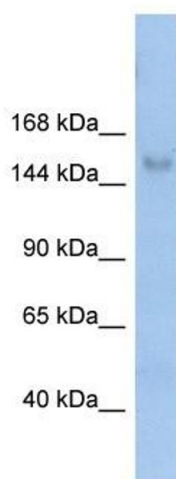
Application Details

Application Notes:	WB: 1 µg/mL Optimal conditions should be determined by the investigator.
Comment:	MOV10L1 Blocking Peptide, catalog no. 33R-5253, is also available for use as a blocking control in assays to test for specificity of this MOV10L1 antibody
Restrictions:	For Research Use only

Handling

Format:	Lyophilized
Reconstitution:	Lyophilized powder. Add distilled water for a 1 mg/mL concentration of MOV10 1 antibody in PBS
Concentration:	Lot specific
Buffer:	PBS
Handling Advice:	Avoid repeated freeze/thaw cycles.
Storage:	4 °C/-20 °C
Storage Comment:	Store at 2-8 °C for short periods. For longer periods of storage, store at -20 °C.

Images



Western Blotting

Image 1. MOV10L1 antibody used at 1 ug/ml to detect target protein.