

Datasheet for ABIN633319
anti-ZCCHC17 antibody (C-Term)



[Go to Product page](#)

1 Image

Overview

Quantity:	100 µL
Target:	ZCCHC17
Binding Specificity:	C-Term
Reactivity:	Human
Host:	Rabbit
Clonality:	Polyclonal
Conjugate:	This ZCCHC17 antibody is un-conjugated
Application:	Western Blotting (WB)

Product Details

Immunogen:	ZCCHC17 antibody was raised using the C terminal of ZCCHC17 corresponding to a region with amino acids PSRKRKKEKKKKKHRDRKSSDSDSSDSESDTGKRARHTSKDSKAAK
Specificity:	ZCCHC17 antibody was raised against the C terminal of ZCCHC17
Purification:	Affinity purified

Target Details

Target:	ZCCHC17
Alternative Name:	ZCCHC17 (ZCCHC17 Products)
Background:	ZCCHC17 contains 1 CCHC-type zinc finger and 1 S1 motif domain. The exact function of ZDHHC19 remains unknown.

Target Details

Molecular Weight: 27 kDa (MW of target protein)

Application Details

Application Notes: WB: 1 µg/mL
Optimal conditions should be determined by the investigator.

Comment: ZCCHC17 Blocking Peptide, catalog no. 33R-7371, is also available for use as a blocking control in assays to test for specificity of this ZCCHC17 antibody

Restrictions: For Research Use only

Handling

Format: Lyophilized

Reconstitution: Lyophilized powder. Add distilled water for a 1 mg/mL concentration of ZCCHC17 antibody in PBS

Concentration: Lot specific

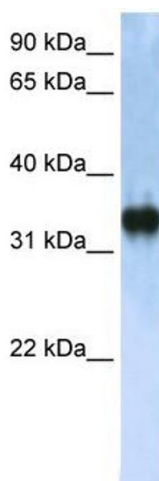
Buffer: PBS

Handling Advice: Avoid repeated freeze/thaw cycles.
Dilute only prior to immediate use.

Storage: 4 °C/-20 °C

Storage Comment: Store at 2-8 °C for short periods. For longer periods of storage, store at -20 °C.

Images



Western Blotting

Image 1. ZCCHC17 antibody used at 1 µg/ml to detect target protein.