

Datasheet for ABIN633331 **anti-PSMA1 antibody**



[Go to Product page](#)

1 Image

Overview

Quantity:	100 µL
Target:	PSMA1
Reactivity:	Human, Mouse, Rat, Dog, Zebrafish (Danio rerio)
Host:	Rabbit
Clonality:	Polyclonal
Conjugate:	This PSMA1 antibody is un-conjugated
Application:	Western Blotting (WB)

Product Details

Immunogen:	PSMA1 antibody was raised using a synthetic peptide corresponding to a region with amino acids TYLERHMSEFMECNLNELVKHGLRALRETLPAEQDLTTKNVSIQVIGKDL
Purification:	Affinity purified

Target Details

Target:	PSMA1
Alternative Name:	PSMA1 (PSMA1 Products)
Background:	The proteasome is a multicatalytic proteinase complex with a highly ordered ring-shaped 20S core structure. The core structure is composed of 4 rings of 28 non-identical subunits, 2 rings are composed of 7 alpha subunits and 2 rings are composed of 7 beta subunits. Proteasomes are distributed throughout eukaryotic cells at a high concentration and cleave peptides in an ATP/ubiquitin-dependent process in a non-lysosomal pathway. An essential function of a

Target Details

modified proteasome, the immunoproteasome, is the processing of class I MHC peptides.
PSMA1 is a member of the peptidase T1A family which is a 20S core alpha subunit.

Molecular Weight: 29 kDa (MW of target protein)

Pathways: [Mitotic G1-G1/S Phases](#), [DNA Replication](#), [Synthesis of DNA](#)

Application Details

Application Notes: WB: 0.25 µg/mL
Optimal conditions should be determined by the investigator.

Comment: PSMA1 Blocking Peptide, catalog no. 33R-9392, is also available for use as a blocking control in assays to test for specificity of this PSMA1 antibody

Restrictions: For Research Use only

Handling

Format: Lyophilized

Reconstitution: Lyophilized powder. Add distilled water for a 1 mg/mL concentration of PSMA1 antibody in PBS

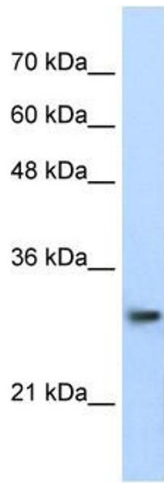
Concentration: Lot specific

Buffer: PBS

Handling Advice: Avoid repeated freeze/thaw cycles.

Storage: 4 °C/-20 °C

Storage Comment: Store at 2-8 °C for short periods. For longer periods of storage, store at -20 °C.



Western Blotting

Image 1. PSMA1 antibody used at 0.25 ug/ml to detect target protein.