

Datasheet for ABIN633333
anti-TROVE2 antibody (N-Term)



[Go to Product page](#)

2 Images

Overview

Quantity:	100 µL
Target:	TROVE2
Binding Specificity:	N-Term
Reactivity:	Human, Mouse, Dog
Host:	Rabbit
Clonality:	Polyclonal
Conjugate:	This TROVE2 antibody is un-conjugated
Application:	Western Blotting (WB), Immunohistochemistry (IHC)

Product Details

Immunogen:	TROVE2 antibody was raised using the N terminal of TROVE2 corresponding to a region with amino acids QDGYVWQVTD MNRLHRFLCFGSEGGTYI KEQKLGLENAEALIRLIEDGR
Specificity:	TROVE2 antibody was raised against the N terminal of TROVE2
Purification:	Affinity purified

Target Details

Target:	TROVE2
Alternative Name:	TROVE2 (TROVE2 Products)
Background:	TROVE2 belongs to the Ro 60 kDa family. It is RNA-binding protein that binds to several small cytoplasmic RNA molecules known as Y RNAs. It may stabilize these RNAs from degradation.

Target Details

Molecular Weight: 58 kDa (MW of target protein)

Application Details

Application Notes: WB: 1 µg/mL, IHC: 4-8 µg/mL
Optimal conditions should be determined by the investigator.

Comment: TROVE2 Blocking Peptide, catalog no. 33R-7498, is also available for use as a blocking control in assays to test for specificity of this TROVE2 antibody

Restrictions: For Research Use only

Handling

Format: Lyophilized

Reconstitution: Lyophilized powder. Add distilled water for a 1 mg/mL concentration of TROVE2 antibody in PBS

Concentration: Lot specific

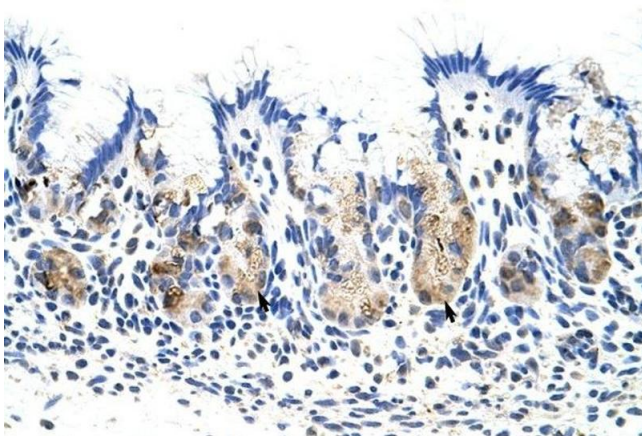
Buffer: PBS

Handling Advice: Avoid repeated freeze/thaw cycles.
Dilute only prior to immediate use.

Storage: 4 °C/-20 °C

Storage Comment: Store at 2-8 °C for short periods. For longer periods of storage, store at -20 °C.

Images



Immunohistochemistry

Image 1. TROVE2 antibody was used for immunohistochemistry at a concentration of 4-8 ug/ml to stain Epithelial cells of fundic gland (arrows) in Human Stomach. Magnification is at 400X



Western Blotting

Image 2. TROVE2 antibody used at 1 ug/ml to detect target protein.