

Datasheet for ABIN633337
anti-THOC1 antibody (C-Term)

3 Images



[Go to Product page](#)

Overview

Quantity:	100 µL
Target:	THOC1
Binding Specificity:	C-Term
Reactivity:	Human, Mouse, Rat
Host:	Rabbit
Clonality:	Polyclonal
Conjugate:	This THOC1 antibody is un-conjugated
Application:	Western Blotting (WB), Immunohistochemistry (IHC)

Product Details

Immunogen:	THOC1 antibody was raised using the C terminal of THOC1 corresponding to a region with amino acids TNQQFKSLQEYLENMVIKLAKE LPPPSEEIKTGEDEDEEDNDALLKENES
Specificity:	THOC1 antibody was raised against the C terminal of THOC1
Purification:	Affinity purified

Target Details

Target:	THOC1
Alternative Name:	THOC1 (THOC1 Products)
Background:	THOC1 is part of the TREX (transcription/export) complex, which includes TEX1, THO2, ALY, and UAP56.

Target Details

Molecular Weight: 76 kDa (MW of target protein)

Application Details

Application Notes: WB: 0.25 µg/mL, IHC: 4-8 µg/mL
Optimal conditions should be determined by the investigator.

Comment: THOC1 Blocking Peptide, catalog no. 33R-9212, is also available for use as a blocking control in assays to test for specificity of this THOC1 antibody

Restrictions: For Research Use only

Handling

Format: Lyophilized

Reconstitution: Lyophilized powder. Add distilled water for a 1 mg/mL concentration of THOC1 antibody in PBS

Concentration: Lot specific

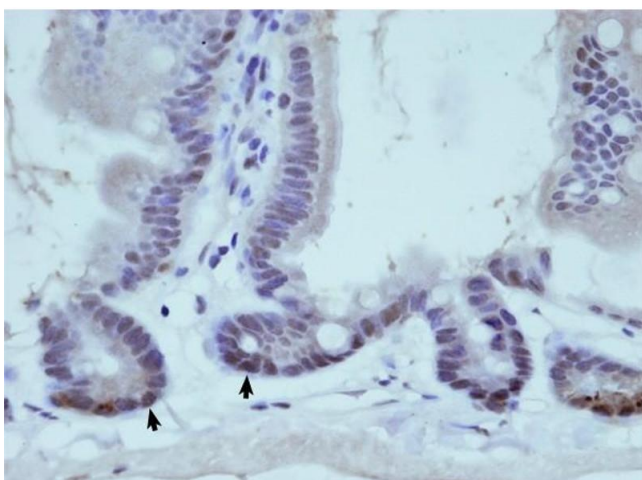
Buffer: PBS

Handling Advice: Avoid repeated freeze/thaw cycles.
Dilute only prior to immediate use.

Storage: 4 °C/-20 °C

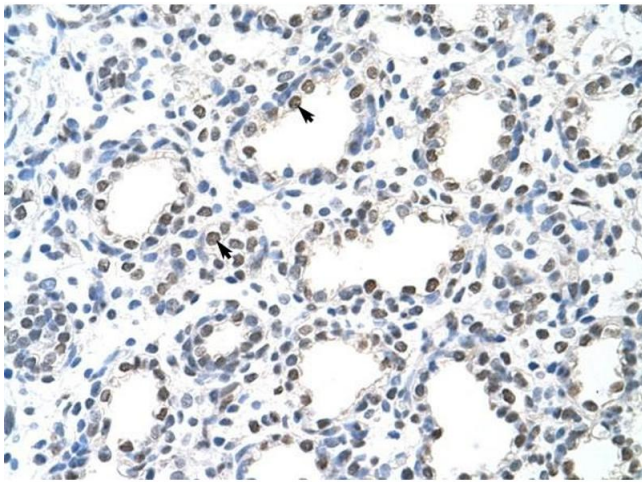
Storage Comment: Store at 2-8 °C for short periods. For longer periods of storage, store at -20 °C.

Images



Immunohistochemistry

Image 1. THOC1 antibody was used for immunohistochemistry at a concentration of 0.1 µg/ml to stain Crypt-Villus Axis Antibody in Murine Small Intestine. Magnification is at 40X



Immunohistochemistry

Image 2. THOC1 antibody was used for immunohistochemistry at a concentration of 4-8 ug/ml to stain Alveolar cells (arrows) in Human Lung. Magnification is at 400X.



Western Blotting

Image 3. THOC1 antibody used at 0.25 ug/ml to detect target protein.