

## Datasheet for ABIN633353 **anti-PCBP3 antibody**



[Go to Product page](#)

### 1 Image

#### Overview

Quantity:	100 µL
Target:	PCBP3
Reactivity:	Human, Mouse
Host:	Rabbit
Clonality:	Polyclonal
Conjugate:	This PCBP3 antibody is un-conjugated
Application:	Western Blotting (WB)

#### Product Details

Immunogen:	PCBP3 antibody was raised using a synthetic peptide corresponding to a region with amino acids QTPFPPLGQTNPAFPGEKPLHSSEEAQNLMGQSSGLDASPPASTHELT I
Purification:	Affinity purified

#### Target Details

Target:	PCBP3
Alternative Name:	PCBP3 ( <a href="#">PCBP3 Products</a> )
Background:	This gene encodes a member of the KH-domain protein subfamily. Proteins of this subfamily, also referred to as alpha-CPs, bind to RNA with a specificity for C-rich pyrimidine regions.
Molecular Weight:	36 kDa (MW of target protein)

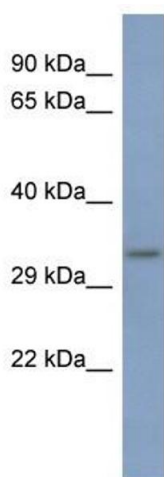
## Application Details

Application Notes:	WB: 1 µg/mL Optimal conditions should be determined by the investigator.
Comment:	PCBP3 Blocking Peptide, catalog no. 33R-7759, is also available for use as a blocking control in assays to test for specificity of this PCBP3 antibody
Restrictions:	For Research Use only

## Handling

Format:	Lyophilized
Reconstitution:	Lyophilized powder. Add distilled water for a 1 mg/mL concentration of PCBP3 antibody in PBS
Concentration:	Lot specific
Buffer:	PBS
Handling Advice:	Avoid repeated freeze/thaw cycles.
Storage:	4 °C/-20 °C
Storage Comment:	Store at 2-8 °C for short periods. For longer periods of storage, store at -20 °C.

## Images



### Western Blotting

**Image 1.** PCBP3 antibody used at 1 µg/ml to detect target protein.