

## Datasheet for ABIN633355 **anti-RBM22 antibody (C-Term)**

### 3 Images



[Go to Product page](#)

### Overview

Quantity:	100 µL
Target:	RBM22
Binding Specificity:	C-Term
Reactivity:	Human, Mouse, Rat, Dog
Host:	Rabbit
Clonality:	Polyclonal
Conjugate:	This RBM22 antibody is un-conjugated
Application:	Western Blotting (WB), Immunohistochemistry (IHC)

### Product Details

Immunogen:	RBM22 antibody was raised using the C terminal of RBM22 corresponding to a region with amino acids KWGRSQAARGKEKEKDGTTDSGIKLEPVPLPGALPPPPAAEEEEASANYF
Specificity:	RBM22 antibody was raised against the C terminal of RBM22
Purification:	Affinity purified

### Target Details

Target:	RBM22
Alternative Name:	RBM22 ( <a href="#">RBM22 Products</a> )
Background:	RBM22 may be involved in pre-mRNA splicing.
Molecular Weight:	46 kDa (MW of target protein)

## Target Details

Pathways: [Protein targeting to Nucleus](#)

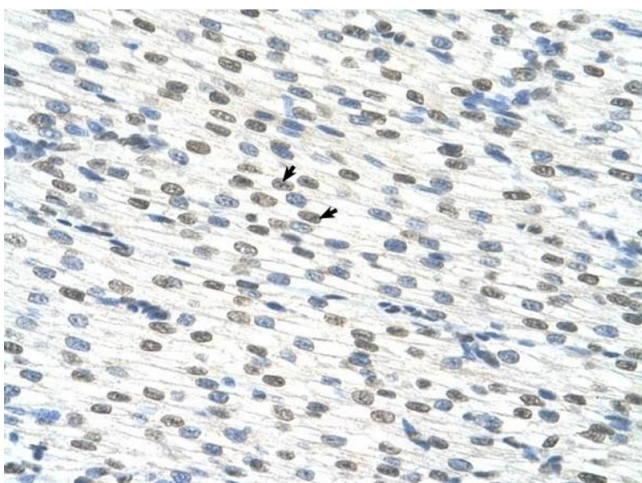
## Application Details

Application Notes:	WB: 0.25 µg/mL, IHC: 4-8 µg/mL Optimal conditions should be determined by the investigator.
Comment:	RBM22 Blocking Peptide, catalog no. 33R-4730, is also available for use as a blocking control in assays to test for specificity of this RBM22 antibody
Restrictions:	For Research Use only

## Handling

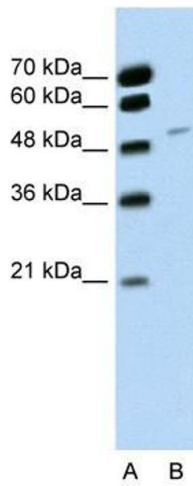
Format:	Lyophilized
Reconstitution:	Lyophilized powder. Add distilled water for a 1 mg/mL concentration of RBM22 antibody in PBS
Concentration:	Lot specific
Buffer:	PBS
Handling Advice:	Avoid repeated freeze/thaw cycles. Dilute only prior to immediate use.
Storage:	4 °C/-20 °C
Storage Comment:	Store at 2-8 °C for short periods. For longer periods of storage, store at -20 °C.

## Images



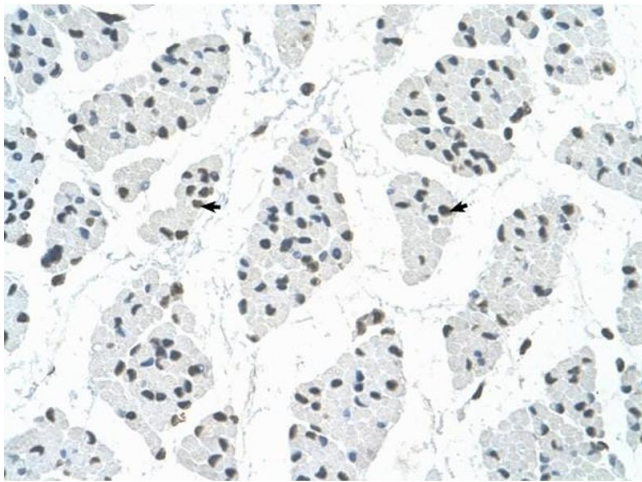
### Immunohistochemistry

**Image 1.** RBM22 antibody was used for immunohistochemistry at a concentration of 4-8 ug/ml to stain Myocardial cells (arrows) in Human Heart. Magnification is at 400X.



### Western Blotting

**Image 2.** RBM22 antibody used at 0.25 ug/ml to detect target protein.



### Immunohistochemistry

**Image 3.** RBM22 antibody was used for immunohistochemistry at a concentration of 4-8 ug/ml to stain Skeletal muscle cells (arrows) in Human Muscle. Magnification is at 400X