

Datasheet for ABIN633361 **anti-DHX9 antibody**

2 Images



[Go to Product page](#)

Overview

Quantity:	100 µL
Target:	DHX9
Reactivity:	Human, Mouse, Rat, Dog
Host:	Rabbit
Clonality:	Polyclonal
Conjugate:	This DHX9 antibody is un-conjugated
Application:	Western Blotting (WB), Immunohistochemistry (IHC)

Product Details

Immunogen:	DHX9 antibody was raised using a synthetic peptide corresponding to a region with amino acids GLHGNWTLLENAKARLNQYFQKEKIQGEYKYTQVGPDHNRSFIAEMTIYIK
Purification:	Affinity purified

Target Details

Target:	DHX9
Alternative Name:	DHX9 (DHX9 Products)
Background:	DEAD box proteins, characterized by the conserved motif Asp-Glu-Ala-Asp (DEAD), are putative RNA helicases. They are implicated in a number of cellular processes involving alteration of RNA secondary structure such as translation initiation, nuclear and mitochondrial splicing, and ribosome and spliceosome assembly. Based on their distribution patterns, some members of this family are believed to be involved in embryogenesis, spermatogenesis, and cellular growth

Target Details

and division. DHX9 is a DEAD box protein with RNA helicase activity. It may participate in melting of DNA:RNA hybrids, such as those that occur during transcription, and may play a role in X-linked gene expression.

Molecular Weight: 141 kDa (MW of target protein)

Application Details

Application Notes: WB: 0.5 µg/mL, IHC: 4-8 µg/mL
Optimal conditions should be determined by the investigator.

Comment: DHX9 Blocking Peptide, catalog no. 33R-3397, is also available for use as a blocking control in assays to test for specificity of this DHX9 antibody

Restrictions: For Research Use only

Handling

Format: Lyophilized

Reconstitution: Lyophilized powder. Add distilled water for a 1 mg/mL concentration of DHX9 antibody in PBS

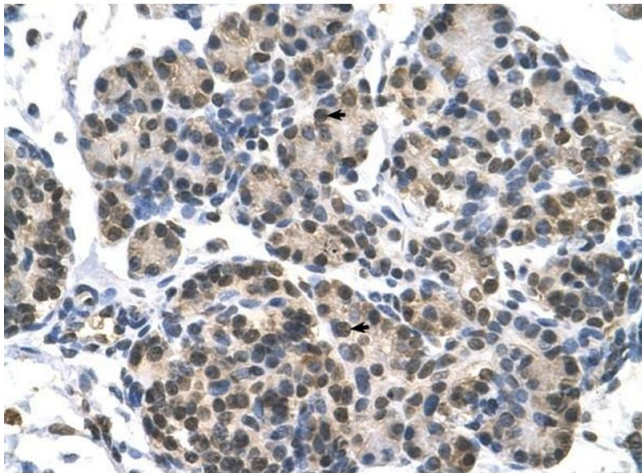
Concentration: Lot specific

Buffer: PBS

Handling Advice: Avoid repeated freeze/thaw cycles.

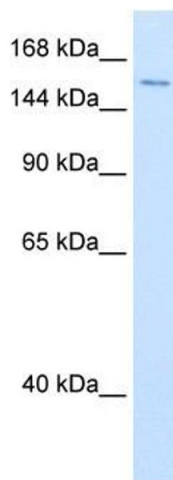
Storage: 4 °C/-20 °C

Storage Comment: Store at 2-8 °C for short periods. For longer periods of storage, store at -20 °C.



Immunohistochemistry

Image 1. DHX9 antibody was used for immunohistochemistry at a concentration of 4-8 ug/ml to stain Epithelial cells of pancreatic acinus (arrows) in Human Pancreas. Magnification is at 400X



Western Blotting

Image 2. DHX9 antibody used at 0.5 ug/ml to detect target protein.