

Datasheet for ABIN633362 **anti-DDX42 antibody**



[Go to Product page](#)

1 Image

Overview

Quantity:	100 µL
Target:	DDX42
Reactivity:	Human, Mouse, Rat
Host:	Rabbit
Clonality:	Polyclonal
Conjugate:	This DDX42 antibody is un-conjugated
Application:	Western Blotting (WB)

Product Details

Immunogen:	DDX42 antibody was raised using a synthetic peptide corresponding to a region with amino acids PLEAFMAEVEDQAARDMKRLEEKDKERKNVKGIRDDIEEEDDQEAYFRYM
Purification:	Affinity purified

Target Details

Target:	DDX42
Alternative Name:	DDX42 (DDX42 Products)
Background:	DDX42 is a member of the Asp-Glu-Ala-Asp (DEAD) box protein family. Members of this protein family are putative RNA helicases, and are implicated in a number of cellular processes involving alteration of RNA secondary structure such as translation initiation, nuclear and mitochondrial splicing, and ribosome and spliceosome assembly.
Molecular Weight:	103 kDa (MW of target protein)

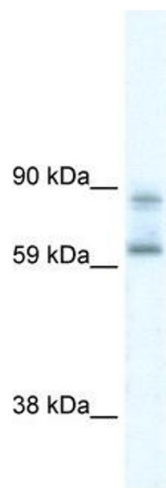
Application Details

Application Notes:	WB: 5 µg/mL Optimal conditions should be determined by the investigator.
Comment:	DDX42 Blocking Peptide, catalog no. 33R-7187, is also available for use as a blocking control in assays to test for specificity of this DDX42 antibody
Restrictions:	For Research Use only

Handling

Format:	Lyophilized
Reconstitution:	Lyophilized powder. Add distilled water for a 1 mg/mL concentration of DDX42 antibody in PBS
Concentration:	Lot specific
Buffer:	PBS
Handling Advice:	Avoid repeated freeze/thaw cycles.
Storage:	4 °C/-20 °C
Storage Comment:	Store at 2-8 °C for short periods. For longer periods of storage, store at -20 °C.

Images



Western Blotting

Image 1. DDX42 antibody used at 5 µg/ml to detect target protein.