

## Datasheet for ABIN633365 **anti-DDX25 antibody**



[Go to Product page](#)

### 1 Image

#### Overview

Quantity:	100 µL
Target:	DDX25
Reactivity:	Human, Mouse, Rat, Dog
Host:	Rabbit
Clonality:	Polyclonal
Conjugate:	This DDX25 antibody is un-conjugated
Application:	Western Blotting (WB)

#### Product Details

Immunogen:	DDX25 antibody was raised using a synthetic peptide corresponding to a region with amino acids TVEMIQDGHQVSLLSGELTVEQRASIIQRFRDGKEKVLITTNVCARGIDV
Purification:	Affinity purified

#### Target Details

Target:	DDX25
Alternative Name:	DDX25 ( <a href="#">DDX25 Products</a> )
Background:	DDX25 is a member of DEAD box proteins family. DEAD box proteins, characterized by the conserved motif Asp-Glu-Ala-Asp (DEAD), are putative RNA helicases. They are implicated in a number of cellular processes involving alteration of RNA secondary structure, such as translation initiation, nuclear and mitochondrial splicing, and ribosome and spliceosome assembly. Based on their distribution patterns, some members of the DEAD box protein family

## Target Details

are believed to be involved in embryogenesis, spermatogenesis, and cellular growth and division.

Molecular Weight: 41 kDa (MW of target protein)

## Application Details

Application Notes: WB: 0.5 µg/mL  
Optimal conditions should be determined by the investigator.

Comment: DDX25 Blocking Peptide, catalog no. 33R-9349, is also available for use as a blocking control in assays to test for specificity of this DDX25 antibody

Restrictions: For Research Use only

## Handling

Format: Lyophilized

Reconstitution: Lyophilized powder. Add distilled water for a 1 mg/mL concentration of DDX25 antibody in PBS

Concentration: Lot specific

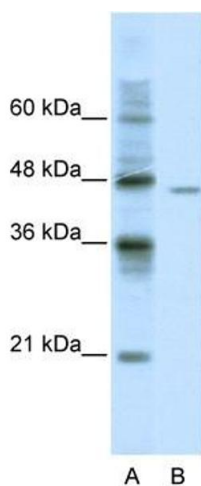
Buffer: PBS

Handling Advice: Avoid repeated freeze/thaw cycles.

Storage: 4 °C/-20 °C

Storage Comment: Store at 2-8 °C for short periods. For longer periods of storage, store at -20 °C.

## Images



### Western Blotting

**Image 1.** DDX25 antibody used at 0.5 ug/ml to detect target protein.