

## Datasheet for ABIN633367 **anti-DHX30 antibody**



[Go to Product page](#)

### 1 Image

#### Overview

Quantity:	100 µL
Target:	DHX30
Reactivity:	Human, Mouse, Rat
Host:	Rabbit
Clonality:	Polyclonal
Conjugate:	This DHX30 antibody is un-conjugated
Application:	Western Blotting (WB)

#### Product Details

Immunogen:	DHX30 antibody was raised using a synthetic peptide corresponding to a region with amino acids AASRDLLKEFPQPKNLLNSVIGRALGISHAKDKLVVHTNGPKKKKVTLH
Purification:	Affinity purified

#### Target Details

Target:	DHX30
Alternative Name:	DHX30 ( <a href="#">DHX30 Products</a> )
Background:	DEAD box proteins, characterized by the conserved motif Asp-Glu-Ala-Asp (DEAD), are putative RNA helicases. They are implicated in a number of cellular processes involving alteration of RNA secondary structure such as translation initiation, nuclear and mitochondrial splicing, and ribosome and spliceosome assembly. Based on their distribution patterns, some members of this DEAD box protein family are believed to be involved in embryogenesis, spermatogenesis,

## Target Details

and cellular growth and division. DHX30 is a member of this family.

Molecular Weight: 129 kDa (MW of target protein)

Pathways: [Chromatin Binding](#)

## Application Details

Application Notes: WB: 1 µg/mL

Optimal conditions should be determined by the investigator.

Comment: DHX30 Blocking Peptide, catalog no. 33R-1048, is also available for use as a blocking control in assays to test for specificity of this DHX30 antibody

Restrictions: For Research Use only

## Handling

Format: Lyophilized

Reconstitution: Lyophilized powder. Add distilled water for a 1 mg/mL concentration of DHX30 antibody in PBS

Concentration: Lot specific

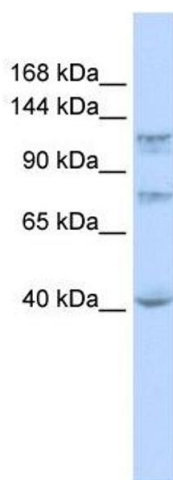
Buffer: PBS

Handling Advice: Avoid repeated freeze/thaw cycles.

Storage: 4 °C/-20 °C

Storage Comment: Store at 2-8 °C for short periods. For longer periods of storage, store at -20 °C.

## Images



### Western Blotting

**Image 1.** DHX30 antibody used at 1 ug/ml to detect target protein.