

Datasheet for ABIN633373
anti-MRPL24 antibody (N-Term)



[Go to Product page](#)

1 Image

Overview

Quantity:	100 µL
Target:	MRPL24
Binding Specificity:	N-Term
Reactivity:	Human, Mouse, Rat
Host:	Rabbit
Clonality:	Polyclonal
Conjugate:	This MRPL24 antibody is un-conjugated
Application:	Western Blotting (WB)

Product Details

Immunogen:	MRPL24 antibody was raised using the N terminal of MRPL24 corresponding to a region with amino acids RRRPVVVEPISEDEDWYLF CGDTVEILEGKDAGKQKVVQVIRQRNWWVVVG
Specificity:	MRPL24 antibody was raised against the N terminal of MRPL24
Purification:	Affinity purified

Target Details

Target:	MRPL24
Alternative Name:	MRPL24 (MRPL24 Products)
Background:	Mammalian mitochondrial ribosomal proteins are encoded by nuclear genes and help in protein synthesis within the mitochondrion. Mitochondrial ribosomes (mitoribosomes) consist of a small 28S subunit and a large 39S subunit. They have an estimated 75% protein to rRNA

Target Details

composition compared to prokaryotic ribosomes, where this ratio is reversed. Another difference between mammalian mitoribosomes and prokaryotic ribosomes is that the latter contain a 5S rRNA. Among different species, the proteins comprising the mitoribosome differ greatly in sequence, and sometimes in biochemical properties, which prevents easy recognition by sequence homology. MRPL24 is a 39S subunit protein which is more than twice the size of its E.coli counterpart (EcoL24).

Molecular Weight: 25 kDa (MW of target protein)

Application Details

Application Notes: WB: 0.5 µg/mL
Optimal conditions should be determined by the investigator.

Comment: MRPL24 Blocking Peptide, catalog no. 33R-8157, is also available for use as a blocking control in assays to test for specificity of this MRPL24 antibody

Restrictions: For Research Use only

Handling

Format: Lyophilized

Reconstitution: Lyophilized powder. Add distilled water for a 1 mg/mL concentration of MRPL24 antibody in PBS

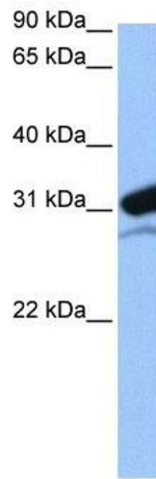
Concentration: Lot specific

Buffer: PBS

Handling Advice: Avoid repeated freeze/thaw cycles.
Dilute only prior to immediate use.

Storage: 4 °C/-20 °C

Storage Comment: Store at 2-8 °C for short periods. For longer periods of storage, store at -20 °C.



Western Blotting

Image 1. MRPL24 antibody used at 0.5 ug/ml to detect target protein.