

Datasheet for ABIN633378  
**anti-RG9MTD1 antibody**



[Go to Product page](#)

1 Image

## Overview

Quantity:	100 µL
Target:	RG9MTD1
Reactivity:	Human
Host:	Rabbit
Clonality:	Polyclonal
Conjugate:	This RG9MTD1 antibody is un-conjugated
Application:	Western Blotting (WB)

## Product Details

Immunogen:	RG9 MTD1 antibody was raised using a synthetic peptide corresponding to a region with amino acids MKRKELQNTVSQLESEGWNRRNVDPFHIYFCNLKIDGALHRELVKRYQE
Purification:	Affinity purified

## Target Details

Target:	RG9MTD1
Alternative Name:	RG9MTD1 ( <a href="#">RG9MTD1 Products</a> )
Background:	RG9MTD1 functions in mitochondrial tRNA maturation. Part of mitochondrial ribonuclease P, an enzyme composed of MRPP1/RG9MTD1, MRPP2/HSD17B10 and MRPP3/KIAA0391, which cleaves tRNA molecules in their 5'-ends.
Molecular Weight:	47 kDa (MW of target protein)

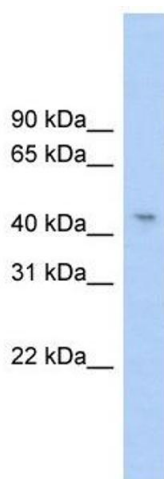
## Application Details

Application Notes:	WB: 1 µg/mL Optimal conditions should be determined by the investigator.
Comment:	RG9MTD1 Blocking Peptide, catalog no. 33R-6162, is also available for use as a blocking control in assays to test for specificity of this RG9MTD1 antibody
Restrictions:	For Research Use only

## Handling

Format:	Lyophilized
Reconstitution:	Lyophilized powder. Add distilled water for a 1 mg/mL concentration of RG0 TD1 antibody in PBS
Concentration:	Lot specific
Buffer:	PBS
Handling Advice:	Avoid repeated freeze/thaw cycles.
Storage:	4 °C/-20 °C
Storage Comment:	Store at 2-8 °C for short periods. For longer periods of storage, store at -20 °C.

## Images



### Western Blotting

**Image 1.** RG9MTD1 antibody used at 1 ug/ml to detect target protein.