

Datasheet for ABIN633380 **anti-RBMY1A1 antibody (N-Term)**



[Go to Product page](#)

1 Image

Overview

Quantity:	100 µL
Target:	RBMY1A1
Binding Specificity:	N-Term
Reactivity:	Human
Host:	Rabbit
Clonality:	Polyclonal
Conjugate:	This RBMY1A1 antibody is un-conjugated
Application:	Western Blotting (WB)

Product Details

Immunogen:	RBMY1 A1 antibody was raised using the N terminal of RBMY1 1 corresponding to a region with amino acids MSYSRGLIPVKRGPSSRSGGPPPKKSAPSAVARNSNSWMSGPMSQRREN
Specificity:	RBMY1 A1 antibody was raised against the N terminal of RBMY1 1
Purification:	Affinity purified

Target Details

Target:	RBMY1A1
Alternative Name:	RBMY1A1 (RBMY1A1 Products)
Background:	RBMY1A1 is a protein containing an RNA-binding motif in the N-terminus and four SRGY (serine, arginine, glycine, tyrosine) boxes in the C-terminus. The gene that encodes RBMY1A1 is Y-linked. RBMY1A1 may be involved in spermatogenesis. It is required for sperm development,

Target Details

possibly by participating in pre-mRNA splicing in the testis.

Molecular Weight: 41 kDa (MW of target protein)

Application Details

Application Notes: WB: 0.5 µg/mL
Optimal conditions should be determined by the investigator.

Comment: RBMY1A1 Blocking Peptide, catalog no. 33R-6530, is also available for use as a blocking control in assays to test for specificity of this RBMY1A1 antibody

Restrictions: For Research Use only

Handling

Format: Lyophilized

Reconstitution: Lyophilized powder. Add distilled water for a 1 mg/mL concentration of RBMY0 1 antibody in PBS

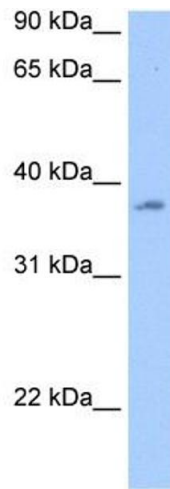
Concentration: Lot specific

Buffer: PBS

Handling Advice: Avoid repeated freeze/thaw cycles.
Dilute only prior to immediate use.

Storage: 4 °C/-20 °C

Storage Comment: Store at 2-8 °C for short periods. For longer periods of storage, store at -20 °C.



Western Blotting

Image 1. RBMY1A1 antibody used at 0.5 ug/ml to detect target protein.