

Datasheet for ABIN633401
anti-SF3A1 antibody (N-Term)



[Go to Product page](#)

1 Image

Overview

Quantity:	100 µL
Target:	SF3A1
Binding Specificity:	N-Term
Reactivity:	Human, Mouse, Rat
Host:	Rabbit
Clonality:	Polyclonal
Conjugate:	This SF3A1 antibody is un-conjugated
Application:	Western Blotting (WB)

Product Details

Immunogen:	SF3 A1 antibody was raised using the N terminal of SF3 1 corresponding to a region with amino acids RQNEINNPKNFLNPNDPYHAYYRHKVSEFKEGKAQEPSAAIPKVMQQQ
Specificity:	SF3 A1 antibody was raised against the N terminal of SF3 1
Purification:	Affinity purified

Target Details

Target:	SF3A1
Alternative Name:	SF3A1 (SF3A1 Products)
Background:	SF3A1 is the subunit 1 of the splicing factor 3a protein complex. The splicing factor 3a heterotrimer includes subunits 1, 2 and 3 and is necessary for the in vitro conversion of 15S U2 snRNP into an active 17S particle that performs pre-mRNA splicing. Subunit 1 belongs to the

Target Details

SURP protein family, named for the SURP motifs that are thought to mediate RNA binding.

Molecular Weight: 89 kDa (MW of target protein)

Pathways: [Ribonucleoprotein Complex Subunit Organization](#)

Application Details

Application Notes: WB: 1 µg/mL

Optimal conditions should be determined by the investigator.

Comment: SF3A1 Blocking Peptide, catalog no. 33R-8124, is also available for use as a blocking control in assays to test for specificity of this SF3A1 antibody

Restrictions: For Research Use only

Handling

Format: Lyophilized

Reconstitution: Lyophilized powder. Add distilled water for a 1 mg/mL concentration of SF0 1 antibody in PBS

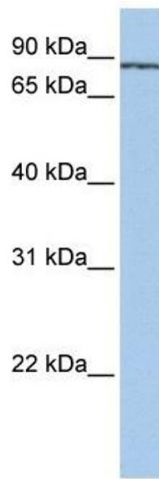
Concentration: Lot specific

Buffer: PBS

Handling Advice: Avoid repeated freeze/thaw cycles.
Dilute only prior to immediate use.

Storage: 4 °C/-20 °C

Storage Comment: Store at 2-8 °C for short periods. For longer periods of storage, store at -20 °C.



Western Blotting

Image 1. SF3A1 antibody used at 1 ug/ml to detect target protein.