

Datasheet for ABIN633405

anti-NOVA1 antibody (C-Term)[Go to Product page](#)**1** Image

Overview

Quantity:	100 µL
Target:	NOVA1
Binding Specificity:	C-Term
Reactivity:	Human, Mouse, Rat
Host:	Rabbit
Clonality:	Polyclonal
Conjugate:	This NOVA1 antibody is un-conjugated
Application:	Western Blotting (WB)

Product Details

Immunogen:	NOVA1 antibody was raised using the C terminal of NOVA1 corresponding to a region with amino acids SKKGEFVPGTRNRKVTITGTPAATQAAQYLITQRITYEQGVRAANPQKVG
Specificity:	NOVA1 antibody was raised against the C terminal of NOVA1
Purification:	Affinity purified

Target Details

Target:	NOVA1
Alternative Name:	NOVA1 (NOVA1 Products)
Background:	NOVA1 is a neuron-specific RNA-binding protein, a member of the Nova family of paraneoplastic disease antigens, that is recognised and inhibited by paraneoplastic antibodies. These antibodies are found in the sera of patients with paraneoplastic opsoclonus-ataxia,

Target Details

	breast cancer, and small cell lung cancer.
Molecular Weight:	52 kDa (MW of target protein)

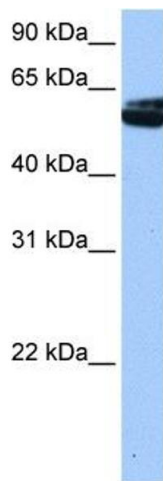
Application Details

Application Notes:	WB: 0.5 µg/mL Optimal conditions should be determined by the investigator.
Comment:	NOVA1 Blocking Peptide, catalog no. 33R-8555, is also available for use as a blocking control in assays to test for specificity of this NOVA1 antibody
Restrictions:	For Research Use only

Handling

Format:	Lyophilized
Reconstitution:	Lyophilized powder. Add distilled water for a 1 mg/mL concentration of NOVA1 antibody in PBS
Concentration:	Lot specific
Buffer:	PBS
Handling Advice:	Avoid repeated freeze/thaw cycles. Dilute only prior to immediate use.
Storage:	4 °C/-20 °C
Storage Comment:	Store at 2-8 °C for short periods. For longer periods of storage, store at -20 °C.

Images



Western Blotting

Image 1. NOVA1 antibody used at 0.5 ug/ml to detect target protein.