

## Datasheet for ABIN633409 **anti-ELAVL4 antibody (N-Term)**



[Go to Product page](#)

### 1 Image

#### Overview

Quantity:	100 µL
Target:	ELAVL4
Binding Specificity:	N-Term
Reactivity:	Human
Host:	Rabbit
Clonality:	Polyclonal
Conjugate:	This ELAVL4 antibody is un-conjugated
Application:	Western Blotting (WB)

#### Product Details

Immunogen:	ELAVL4 antibody was raised using the N terminal of ELAVL4 corresponding to a region with amino acids MQTGATTDDSKTNLIVNYLPQNMTQEEFRSLFGSIGEIESCKLVRDKITG
Specificity:	ELAVL4 antibody was raised against the N terminal of ELAVL4
Purification:	Affinity purified

#### Target Details

Target:	ELAVL4
Alternative Name:	ELAVL4 ( <a href="#">ELAVL4 Products</a> )
Background:	ELAVL4 may play a role in neuron-specific RNA processing. ELAVL4 protects CDKN1A mRNA from decay by binding to its 3'-UTR. By similarity, ELAVL4 binds to AU-rich sequences (AREs) of target mRNAs, including VEGF and FOS mRNA.

## Target Details

---

Molecular Weight: 42 kDa (MW of target protein)

## Application Details

---

Application Notes: WB: 1 µg/mL  
Optimal conditions should be determined by the investigator.

Comment: ELAVL4 Blocking Peptide, catalog no. 33R-6346, is also available for use as a blocking control in assays to test for specificity of this ELAVL4 antibody

Restrictions: For Research Use only

## Handling

---

Format: Lyophilized

Reconstitution: Lyophilized powder. Add distilled water for a 1 mg/mL concentration of ELAVL4 antibody in PBS

Concentration: Lot specific

Buffer: PBS

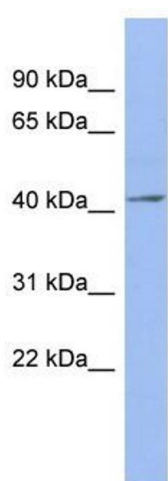
Handling Advice: Avoid repeated freeze/thaw cycles.  
Dilute only prior to immediate use.

Storage: 4 °C/-20 °C

Storage Comment: Store at 2-8 °C for short periods. For longer periods of storage, store at -20 °C.

## Images

---



### Western Blotting

**Image 1.** ELAVL4 antibody used at 1 µg/ml to detect target protein.