

Datasheet for ABIN633412
anti-SRSF12 antibody (Middle Region)



[Go to Product page](#)

1 Image

Overview

Quantity:	100 µL
Target:	SRSF12
Binding Specificity:	Middle Region
Reactivity:	Human
Host:	Rabbit
Clonality:	Polyclonal
Conjugate:	This SRSF12 antibody is un-conjugated
Application:	Western Blotting (WB)

Product Details

Immunogen:	SRRP35 antibody was raised using the middle region of Srrp35 corresponding to a region with amino acids RSRKSLQKRSKSIKSGSQSSSPQKQTSSGTKSRSHGRHSDSIARSPCKSP
Specificity:	SRRP35 antibody was raised against the middle region of Srrp35
Purification:	Affinity purified

Target Details

Target:	SRSF12
Alternative Name:	SRRP35 (SRSF12 Products)
Background:	SRp35 is a splicing factor that seems to antagonize SR proteins in pre-mRNA splicing regulation.

Target Details

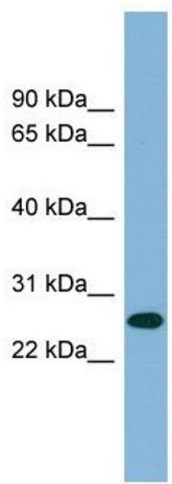
Molecular Weight:	30 kDa (MW of target protein)
Pathways:	Ribonucleoprotein Complex Subunit Organization

Application Details

Application Notes:	WB: 1 µg/mL Optimal conditions should be determined by the investigator.
Comment:	SRRP35 Blocking Peptide, catalog no. 33R-8210, is also available for use as a blocking control in assays to test for specificity of this SRRP35 antibody
Restrictions:	For Research Use only

Handling

Format:	Lyophilized
Reconstitution:	Lyophilized powder. Add distilled water for a 1 mg/mL concentration of SRRP35 antibody in PBS
Concentration:	Lot specific
Buffer:	PBS
Handling Advice:	Avoid repeated freeze/thaw cycles. Dilute only prior to immediate use.
Storage:	4 °C/-20 °C
Storage Comment:	Store at 2-8 °C for short periods. For longer periods of storage, store at -20 °C.



Western Blotting

Image 1. SRRP35 antibody used at 1 ug/ml to detect target protein.