

Datasheet for ABIN633424 **anti-CPEB2 antibody (N-Term)**



[Go to Product page](#)

1 Image

Overview

Quantity:	100 µL
Target:	CPEB2
Binding Specificity:	N-Term
Reactivity:	Human, Mouse, Rat
Host:	Rabbit
Clonality:	Polyclonal
Conjugate:	This CPEB2 antibody is un-conjugated
Application:	Western Blotting (WB)

Product Details

Immunogen:	CPEB2 antibody was raised using the N terminal of CPEB2 corresponding to a region with amino acids FLQQRNSYNHHQPLLKQSPWSNHQSSGWGTGMSWSGAMHGRDHRRTGNMG
Specificity:	CPEB2 antibody was raised against the N terminal of CPEB2
Purification:	Affinity purified

Target Details

Target:	CPEB2
Alternative Name:	CPEB2 (CPEB2 Products)
Background:	CPEB2 is highly similar to cytoplasmic polyadenylation element binding protein (CPEB), an mRNA-binding protein that regulates cytoplasmic polyadenylation of mRNA as a trans factor in oogenesis and spermatogenesis. Studies of the similar gene in mice suggested a possible role

Target Details

of this protein in transcriptionally inactive haploid spermatids.

Molecular Weight: 65 kDa (MW of target protein)

Application Details

Application Notes: WB: 0.5 µg/mL

Optimal conditions should be determined by the investigator.

Comment: CPEB2 Blocking Peptide, catalog no. 33R-2978, is also available for use as a blocking control in assays to test for specificity of this CPEB2 antibody

Restrictions: For Research Use only

Handling

Format: Lyophilized

Reconstitution: Lyophilized powder. Add distilled water for a 1 mg/mL concentration of CPEB2 antibody in PBS

Concentration: Lot specific

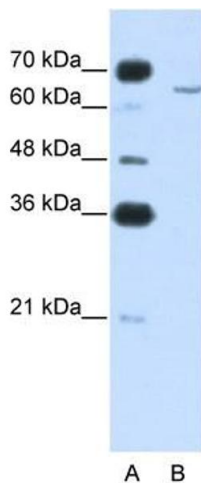
Buffer: PBS

Handling Advice: Avoid repeated freeze/thaw cycles.
Dilute only prior to immediate use.

Storage: 4 °C/-20 °C

Storage Comment: Store at 2-8 °C for short periods. For longer periods of storage, store at -20 °C.

Images



Western Blotting

Image 1. CPEB2 antibody used at 0.5 µg/ml to detect target protein.