

Datasheet for ABIN633430
anti-GIPC1 antibody (N-Term)



[Go to Product page](#)

1 Image

Overview

Quantity:	100 µL
Target:	GIPC1
Binding Specificity:	N-Term
Reactivity:	Human, Mouse, Rat, Dog, Zebrafish (Danio rerio)
Host:	Rabbit
Clonality:	Polyclonal
Conjugate:	This GIPC1 antibody is un-conjugated
Application:	Western Blotting (WB)

Product Details

Immunogen:	GIPC1 antibody was raised using the N terminal of GIPC1 corresponding to a region with amino acids SGGPQMGLPPPPALRPRLVFHTQLAHGSPTGRIEGFTNVKELYGKIAEA
Specificity:	GIPC1 antibody was raised against the N terminal of GIPC1
Purification:	Affinity purified

Target Details

Target:	GIPC1
Alternative Name:	GIPC1 (GIPC1 Products)
Background:	GIPC1 belongs to the GIPC family. It may be involved in G protein-linked signaling.
Molecular Weight:	37 kDa (MW of target protein)

Target Details

Pathways: [Dicarboxylic Acid Transport](#)

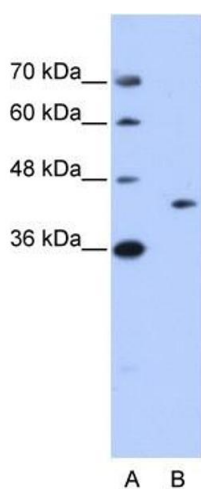
Application Details

Application Notes:	WB: 1 µg/mL Optimal conditions should be determined by the investigator.
Comment:	GIPC1 Blocking Peptide, catalog no. 33R-8461, is also available for use as a blocking control in assays to test for specificity of this GIPC1 antibody
Restrictions:	For Research Use only

Handling

Format:	Lyophilized
Reconstitution:	Lyophilized powder. Add distilled water for a 1 mg/mL concentration of GIPC1 antibody in PBS
Concentration:	Lot specific
Buffer:	PBS
Handling Advice:	Avoid repeated freeze/thaw cycles. Dilute only prior to immediate use.
Storage:	4 °C/-20 °C
Storage Comment:	Store at 2-8 °C for short periods. For longer periods of storage, store at -20 °C.

Images



Western Blotting

Image 1. GIPC1 antibody used at 1 µg/ml to detect target protein.