

Datasheet for ABIN633438
anti-CPSF2 antibody (N-Term)



[Go to Product page](#)

1 Image

Overview

Quantity:	100 µL
Target:	CPSF2
Binding Specificity:	N-Term
Reactivity:	Human, Mouse, Rat
Host:	Rabbit
Clonality:	Polyclonal
Conjugate:	This CPSF2 antibody is un-conjugated
Application:	Western Blotting (WB)

Product Details

Immunogen:	CPSF2 antibody was raised using the N terminal of CPSF2 corresponding to a region with amino acids YAVGKLGLNCAIYATIPVYKMGQMFMYDLYQSRHNTEDFTLFTLDDVDAA
Specificity:	CPSF2 antibody was raised against the N terminal of CPSF2
Purification:	Affinity purified

Target Details

Target:	CPSF2
Alternative Name:	CPSF2 (CPSF2 Products)
Background:	CPSF2 is a component of the cleavage and polyadenylation specificity factor (CPSF) complex that play a key role in pre-mRNA 3'-end formation, recognizing the AAUAAA signal sequence and interacting with poly(A) polymerase and other factors to bring about cleavage and poly(A)

Target Details

addition. It belongs to the metallo-beta-lactamase superfamily, RNA-metabolizing metallo-beta-lactamase-like family, CPSF2/YSH1 subfamily.

Molecular Weight: 88 kDa (MW of target protein)

Application Details

Application Notes: WB: 0.5 µg/mL
Optimal conditions should be determined by the investigator.

Comment: CPSF2 Blocking Peptide, catalog no. 33R-10053, is also available for use as a blocking control in assays to test for specificity of this CPSF2 antibody

Restrictions: For Research Use only

Handling

Format: Lyophilized

Reconstitution: Lyophilized powder. Add distilled water for a 1 mg/mL concentration of CPSF2 antibody in PBS

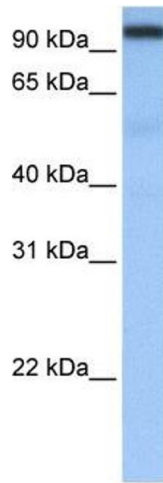
Concentration: Lot specific

Buffer: PBS

Handling Advice: Avoid repeated freeze/thaw cycles.
Dilute only prior to immediate use.

Storage: 4 °C/-20 °C

Storage Comment: Store at 2-8 °C for short periods. For longer periods of storage, store at -20 °C.



Western Blotting

Image 1. CPSF2 antibody used at 0.5 ug/ml to detect target protein.