

Datasheet for ABIN633439 **anti-FIP1L1 antibody**



[Go to Product page](#)

1 Image

Overview

Quantity:	100 µL
Target:	FIP1L1
Reactivity:	Human, Mouse, Rat, Dog
Host:	Rabbit
Clonality:	Polyclonal
Conjugate:	This FIP1L1 antibody is un-conjugated
Application:	Western Blotting (WB)

Product Details

Immunogen:	FIP1 L1 antibody was raised using a synthetic peptide corresponding to a region with amino acids EYAERGYERHRASREKEERHRERRHREKEETRHKSSRSNSRRRHESEEGD
Purification:	Affinity purified

Target Details

Target:	FIP1L1
Alternative Name:	FIP1L1 (FIP1L1 Products)
Background:	FIP1L1 is a component of the cleavage and polyadenylation specificity factor (CPSF) complex that plays a key role in pre-mRNA 3'-end formation, recognizing the AAUAAA signal sequence and interacting with poly(A) polymerase and other factors to bring about cleavage and poly(A) addition. FIP1L1 contributes to poly(A) site recognition and stimulates poly(A) addition. It binds to U-rich RNA sequence elements surrounding the poly(A) site. FIP1L1 may act to tether poly(A)

Target Details

polymerase to the CPSF complex.

Molecular Weight: 65 kDa (MW of target protein)

Application Details

Application Notes: WB: 0.5 µg/mL

Optimal conditions should be determined by the investigator.

Comment: FIP1L1 Blocking Peptide, catalog no. 33R-2814, is also available for use as a blocking control in assays to test for specificity of this FIP1L1 antibody

Restrictions: For Research Use only

Handling

Format: Lyophilized

Reconstitution: Lyophilized powder. Add distilled water for a 1 mg/mL concentration of FIP0 1 antibody in PBS

Concentration: Lot specific

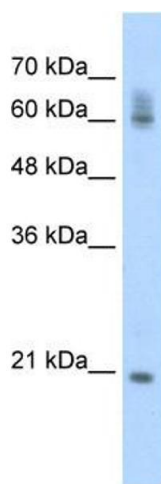
Buffer: PBS

Handling Advice: Avoid repeated freeze/thaw cycles.

Storage: 4 °C/-20 °C

Storage Comment: Store at 2-8 °C for short periods. For longer periods of storage, store at -20 °C.

Images



Western Blotting

Image 1. FIP1L1 antibody used at 0.5 µg/ml to detect target protein.