

## Datasheet for ABIN633455 **anti-CSTF3 antibody (N-Term)**



[Go to Product page](#)

### 1 Image

#### Overview

Quantity:	100 µL
Target:	CSTF3
Binding Specificity:	N-Term
Reactivity:	Human, Mouse, Rat, Dog, Zebrafish (Danio rerio)
Host:	Rabbit
Clonality:	Polyclonal
Conjugate:	This CSTF3 antibody is un-conjugated
Application:	Western Blotting (WB)

#### Product Details

Immunogen:	CSTF3 antibody was raised using the N terminal of CSTF3 corresponding to a region with amino acids YIEAEIKAKNYDKVEKLFQRCLMKVLHIDLWKCYLSYVRETGKGLPSYKE
Specificity:	CSTF3 antibody was raised against the N terminal of CSTF3
Purification:	Affinity purified

#### Target Details

Target:	CSTF3
Alternative Name:	CSTF3 ( <a href="#">CSTF3 Products</a> )
Background:	CSTF3 is one of three (including CSTF1 and CSTF2) cleavage stimulation factors that combine to form the cleavage stimulation factor complex (CSTF). This complex is involved in the polyadenylation and 3' end cleavage of pre-mRNAs. The protein functions as a homodimer and

## Target Details

interacts directly with both CSTF1 and CSTF2 in the CSTF complex.

Molecular Weight: 79 kDa (MW of target protein)

## Application Details

Application Notes: WB: 0.25 µg/mL  
Optimal conditions should be determined by the investigator.

Comment: CSTF3 Blocking Peptide, catalog no. 33R-10133, is also available for use as a blocking control in assays to test for specificity of this CSTF3 antibody

Restrictions: For Research Use only

## Handling

Format: Lyophilized

Reconstitution: Lyophilized powder. Add distilled water for a 1 mg/mL concentration of CSTF3 antibody in PBS

Concentration: Lot specific

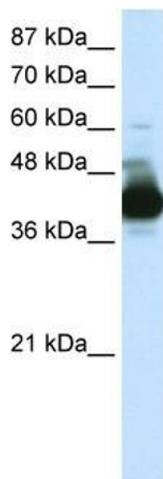
Buffer: PBS

Handling Advice: Avoid repeated freeze/thaw cycles.  
Dilute only prior to immediate use.

Storage: 4 °C/-20 °C

Storage Comment: Store at 2-8 °C for short periods. For longer periods of storage, store at -20 °C.

## Images



### Western Blotting

**Image 1.** CSTF3 antibody used at 0.25 µg/ml to detect target protein.