

Datasheet for ABIN633458 **anti-SFRS8 antibody**



[Go to Product page](#)

1 Image

Overview

Quantity:	100 µL
Target:	SFRS8 (SFSWAP)
Reactivity:	Human, Mouse
Host:	Rabbit
Clonality:	Polyclonal
Conjugate:	This SFRS8 antibody is un-conjugated
Application:	Western Blotting (WB)

Product Details

Immunogen:	SFRS8 antibody was raised using a synthetic peptide corresponding to a region with amino acids LVFGYACKLFRDDERALAQEQGQHLPWMDHKILIDRYDGRGHLHDLSE
Purification:	Affinity purified

Target Details

Target:	SFRS8 (SFSWAP)
Alternative Name:	SFRS8 (SFSWAP Products)
Background:	This gene encodes a human homolog of Drosophila splicing regulatory protein. This gene autoregulates its expression by control of splicing of its first two introns. In addition, it also regulates the splicing of fibronectin and CD45 genes. Multiple alternatively spliced variants have been identified although their full-length natures have not been characterized to date.
Molecular Weight:	105 kDa (MW of target protein)

Target Details

Pathways: [Ribonucleoprotein Complex Subunit Organization](#)

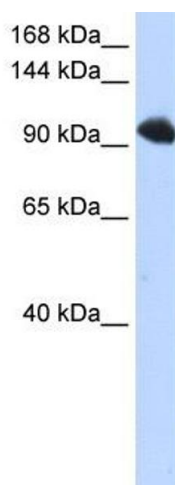
Application Details

Application Notes:	WB: 1 µg/mL Optimal conditions should be determined by the investigator.
Comment:	SFRS8 Blocking Peptide, catalog no. 33R-5508, is also available for use as a blocking control in assays to test for specificity of this SFRS8 antibody
Restrictions:	For Research Use only

Handling

Format:	Lyophilized
Reconstitution:	Lyophilized powder. Add distilled water for a 1 mg/mL concentration of SFRS8 antibody in PBS
Concentration:	Lot specific
Buffer:	PBS
Handling Advice:	Avoid repeated freeze/thaw cycles.
Storage:	4 °C/-20 °C
Storage Comment:	Store at 2-8 °C for short periods. For longer periods of storage, store at -20 °C.

Images



Western Blotting

Image 1. SFRS8 antibody used at 1 ug/ml to detect target protein.