

Datasheet for ABIN633465 **anti-RPL13 antibody (C-Term)**



[Go to Product page](#)

1 Image

Overview

Quantity:	100 µL
Target:	RPL13
Binding Specificity:	C-Term
Reactivity:	Human, Mouse, Rat
Host:	Rabbit
Clonality:	Polyclonal
Conjugate:	This RPL13 antibody is un-conjugated
Application:	Western Blotting (WB)

Product Details

Immunogen:	RPL13 antibody was raised using the C terminal of RPL13 corresponding to a region with amino acids KKEKARVITEEEKNFKAFASLRMARANARLFGIRAKRAKEAAEQDVEKKK
Specificity:	RPL13 antibody was raised against the C terminal of RPL13
Purification:	Affinity purified

Target Details

Target:	RPL13
Alternative Name:	RPL13 (RPL13 Products)
Background:	Ribosomes, the organelles that catalyze protein synthesis, consist of a small 40S subunit and a large 60S subunit. Together these subunits are composed of 4 RNA species and approximately 80 structurally distinct proteins. RPL13 is a ribosomal protein that is a component of the 60S

Target Details

subunit. The protein belongs to the L13E family of ribosomal proteins. It is located in the cytoplasm. This gene is expressed at significantly higher levels in benign breast lesions than in breast carcinomas.

Molecular Weight: 24 kDa (MW of target protein)

Application Details

Application Notes: WB: 0.0625 µg/mL
Optimal conditions should be determined by the investigator.

Comment: RPL13 Blocking Peptide, catalog no. 33R-4457, is also available for use as a blocking control in assays to test for specificity of this RPL13 antibody

Restrictions: For Research Use only

Handling

Format: Lyophilized

Reconstitution: Lyophilized powder. Add distilled water for a 1 mg/mL concentration of RPL13 antibody in PBS

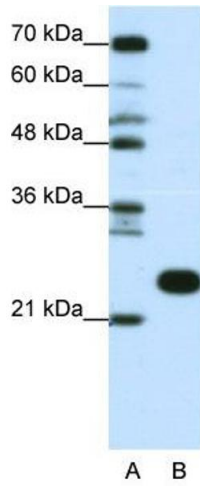
Concentration: Lot specific

Buffer: PBS

Handling Advice: Avoid repeated freeze/thaw cycles.
Dilute only prior to immediate use.

Storage: 4 °C/-20 °C

Storage Comment: Store at 2-8 °C for short periods. For longer periods of storage, store at -20 °C.



Western Blotting

Image 1. RPL13 antibody used at 0.0625 ug/ml to detect target protein.