

Datasheet for ABIN633466
anti-FOXRED1 antibody (N-Term)



[Go to Product page](#)

1 Image

Overview

Quantity:	100 µL
Target:	FOXRED1
Binding Specificity:	N-Term
Reactivity:	Human
Host:	Rabbit
Clonality:	Polyclonal
Conjugate:	This FOXRED1 antibody is un-conjugated
Application:	Western Blotting (WB)

Product Details

Immunogen:	FOXRED1 antibody was raised using the N terminal of FOXRED1 corresponding to a region with amino acids SEIKKKIKSILPGRSCDLLQDTSHLPPEHSDVVIVGGGVLGLSVAYWLKK
Specificity:	FOXRED1 antibody was raised against the N terminal of FOXRED1
Purification:	Affinity purified

Target Details

Target:	FOXRED1
Alternative Name:	FOXRED1 (FOXRED1 Products)
Background:	The FOXRED1 protein contains a FAD-dependent oxidoreductase domain. The encoded protein is localized to the mitochondria and may function as a chaperone protein required for the function of mitochondrial complex I. Mutations in this gene are associated with mitochondrial

Target Details

complex I deficiency. Alternatively spliced transcript variants have been observed for this gene.

Molecular Weight: 54 kDa (MW of target protein)

Application Details

Application Notes: WB: 1 µg/mL
Optimal conditions should be determined by the investigator.

Comment: FOXRED1 Blocking Peptide, catalog no. 33R-8389, is also available for use as a blocking control in assays to test for specificity of this FOXRED1 antibody

Restrictions: For Research Use only

Handling

Format: Lyophilized

Reconstitution: Lyophilized powder. Add distilled water for a 1 mg/mL concentration of FOXRED1 antibody in PBS

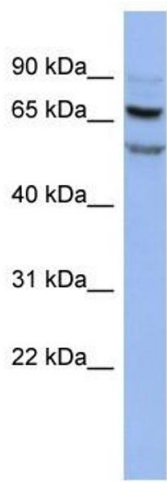
Concentration: Lot specific

Buffer: PBS

Handling Advice: Avoid repeated freeze/thaw cycles.
Dilute only prior to immediate use.

Storage: 4 °C/-20 °C

Storage Comment: Store at 2-8 °C for short periods. For longer periods of storage, store at -20 °C.



Western Blotting

Image 1. FOXRED1 antibody used at 1 ug/ml to detect target protein.