

Datasheet for ABIN633468 **anti-DAZ4 antibody (N-Term)**

3 Images



[Go to Product page](#)

Overview

Quantity:	100 µL
Target:	DAZ4
Binding Specificity:	N-Term
Reactivity:	Human, Dog
Host:	Rabbit
Clonality:	Polyclonal
Conjugate:	This DAZ4 antibody is un-conjugated
Application:	Western Blotting (WB), Immunohistochemistry (IHC)

Product Details

Immunogen:	DAZ4 antibody was raised using the N terminal of DAZ4 corresponding to a region with amino acids MSAANPETPNSTISREASTQSSSAAASQGWVLPKGKIVPNTVFVGGIDAR
Specificity:	DAZ4 antibody was raised against the N terminal of DAZ4
Purification:	Affinity purified

Target Details

Target:	DAZ4
Alternative Name:	DAZ4 (DAZ4 Products)
Background:	This gene is a member of the DAZ gene family and is a candidate for the human Y-chromosomal azoospermia factor (AZF). This RNA-binding protein is important for spermatogenesis.

Target Details

Molecular Weight: 36 kDa (MW of target protein)

Application Details

Application Notes: WB: 1 µg/mL, IHC: 4-8 µg/mL
Optimal conditions should be determined by the investigator.

Comment: DAZ4 Blocking Peptide, catalog no. 33R-6390, is also available for use as a blocking control in assays to test for specificity of this DAZ4 antibody

Restrictions: For Research Use only

Handling

Format: Lyophilized

Reconstitution: Lyophilized powder. Add distilled water for a 1 mg/mL concentration of DAZ4 antibody in PBS

Concentration: Lot specific

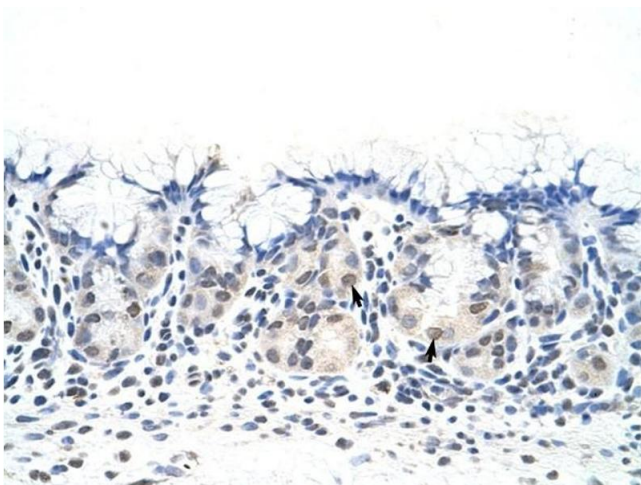
Buffer: PBS

Handling Advice: Avoid repeated freeze/thaw cycles.
Dilute only prior to immediate use.

Storage: 4 °C/-20 °C

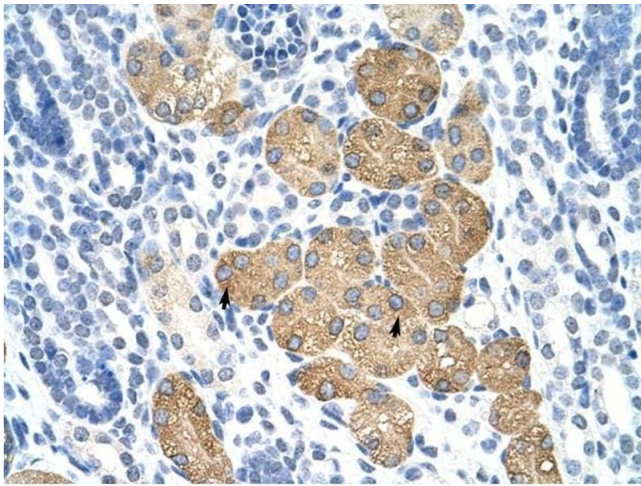
Storage Comment: Store at 2-8 °C for short periods. For longer periods of storage, store at -20 °C.

Images



Immunohistochemistry

Image 1. DAZ4 antibody was used for immunohistochemistry at a concentration of 4-8 ug/ml to stain Epithelial cells of fundic gland (arrows) in Human Stomach. Magnification is at 400X



Immunohistochemistry

Image 2. DAZ4 antibody was used for immunohistochemistry at a concentration of 4-8 ug/ml to stain Epithelial cells of renal tubule (arrows) in Human Kidney. Magnification is at 400X.



Western Blotting

Image 3. DAZ4 antibody used at 1 ug/ml to detect target protein.