

## Datasheet for ABIN633471 **anti-RBPMS antibody (N-Term)**



[Go to Product page](#)

### 1 Image

#### Overview

Quantity:	100 µL
Target:	RBPMS
Binding Specificity:	N-Term
Reactivity:	Human, Rat, Mouse
Host:	Rabbit
Clonality:	Polyclonal
Conjugate:	This RBPMS antibody is un-conjugated
Application:	Western Blotting (WB)

#### Product Details

Immunogen:	RBPMS antibody was raised using the N terminal of RBPMS corresponding to a region with amino acids RELYLLFRPFKGYEGSLIKLTSKQPVGFSFDSRSEAEAAKNALNGIRFD
Specificity:	RBPMS antibody was raised against the N terminal of RBPMS
Purification:	Affinity purified

#### Target Details

Target:	RBPMS
Alternative Name:	RBPMS ( <a href="#">RBPMS Products</a> )
Background:	RBPMS is a member of the RRM family of RNA-binding proteins. The RRM domain is between 80-100 amino acids in length and family members contain one to four copies of the domain. The RRM domain consists of two short stretches of conserved sequence called RNP1 and

## Target Details

---

RNP2, as well as a few highly conserved hydrophobic residues. RBPMS has a single, putative RRM domain in its N-terminus.

Molecular Weight: 22 kDa (MW of target protein)

## Application Details

---

Application Notes: WB: 1 µg/mL  
Optimal conditions should be determined by the investigator.

Comment: RBPMS Blocking Peptide, catalog no. 33R-7880, is also available for use as a blocking control in assays to test for specificity of this RBPMS antibody

Restrictions: For Research Use only

## Handling

---

Format: Lyophilized

Reconstitution: Lyophilized powder. Add distilled water for a 1 mg/mL concentration of RBPMS antibody in PBS

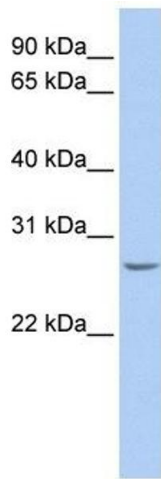
Concentration: Lot specific

Buffer: PBS

Handling Advice: Avoid repeated freeze/thaw cycles.  
Dilute only prior to immediate use.

Storage: 4 °C/-20 °C

Storage Comment: Store at 2-8 °C for short periods. For longer periods of storage, store at -20 °C.



### Western Blotting

**Image 1.** RBPMS antibody used at 1 ug/ml to detect target protein.