

Datasheet for ABIN633475

anti-EIF4G2 antibody (C-Term)



[Go to Product page](#)

1 Image

Overview

Quantity:	100 µL
Target:	EIF4G2
Binding Specificity:	C-Term
Reactivity:	Human, Dog
Host:	Rabbit
Clonality:	Polyclonal
Conjugate:	This EIF4G2 antibody is un-conjugated
Application:	Western Blotting (WB)

Product Details

Immunogen:	EIF4 G2 antibody was raised using the C terminal of EIF4 2 corresponding to a region with amino acids KGFVNILMTSFLQYISSEVNPPSDETDSSSAPSKEQLEQEKQLLLSFKPV
Specificity:	EIF4 G2 antibody was raised against the C terminal of EIF4 2
Purification:	Affinity purified

Target Details

Target:	EIF4G2
Alternative Name:	EIF4G2 (EIF4G2 Products)
Background:	Translation initiation is mediated by specific recognition of the cap structure by eukaryotic translation initiation factor 4F (eIF4F), which is a cap binding protein complex that consists of three subunits: eIF4A, eIF4E and eIF4G. EIF4G2 shares similarity with the C-terminal region of

Target Details

eIF4G that contains the binding sites for eIF4A and eIF3, eIF4G, in addition, contains a binding site for eIF4E at the N-terminus. Unlike eIF4G, which supports cap-dependent and independent translation, EIF4G2 functions as a general repressor of translation by forming translationally inactive complexes.

Molecular Weight: 39 kDa (MW of target protein)

Application Details

Application Notes: WB: 0.5 µg/mL
Optimal conditions should be determined by the investigator.

Comment: EIF4G2 Blocking Peptide, catalog no. 33R-4390, is also available for use as a blocking control in assays to test for specificity of this EIF4G2 antibody

Restrictions: For Research Use only

Handling

Format: Lyophilized

Reconstitution: Lyophilized powder. Add distilled water for a 1 mg/mL concentration of EIF0 2 antibody in PBS

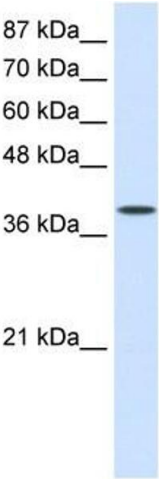
Concentration: Lot specific

Buffer: PBS

Handling Advice: Avoid repeated freeze/thaw cycles.
Dilute only prior to immediate use.

Storage: 4 °C/-20 °C

Storage Comment: Store at 2-8 °C for short periods. For longer periods of storage, store at -20 °C.



Western Blotting

Image 1. EIF4G2 antibody used at 0.5 ug/ml to detect target protein.