

Datasheet for ABIN633487 **anti-RBM38 antibody (N-Term)**

2 Images



[Go to Product page](#)

Overview

Quantity:	100 µL
Target:	RBM38
Binding Specificity:	N-Term
Reactivity:	Human, Mouse, Rat, Dog, Zebrafish (Danio rerio)
Host:	Rabbit
Clonality:	Polyclonal
Conjugate:	This RBM38 antibody is un-conjugated
Application:	Immunohistochemistry (IHC), Western Blotting (WB)

Product Details

Immunogen:	RBM38 antibody was raised using the N terminal of RBM38 corresponding to a region with amino acids LPYHTTDASLRKYFEGFGDIEEAVVITDRQTGKSRGYGFVTMADRAAAER
Specificity:	RBM38 antibody was raised against the N terminal of RBM38
Purification:	Affinity purified

Target Details

Target:	RBM38
Alternative Name:	RBM38 (RBM38 Products)
Background:	RBM38 is a probable RNA-binding protein.
Molecular Weight:	26 kDa (MW of target protein)

Target Details

Pathways: [Regulation of Muscle Cell Differentiation, Skeletal Muscle Fiber Development](#)

Application Details

Application Notes:	WB: 0.25 µg/mL, IHC: 4-8 µg/mL Optimal conditions should be determined by the investigator.
Comment:	RBM38 Blocking Peptide, catalog no. 33R-5295, is also available for use as a blocking control in assays to test for specificity of this RBM38 antibody
Restrictions:	For Research Use only

Handling

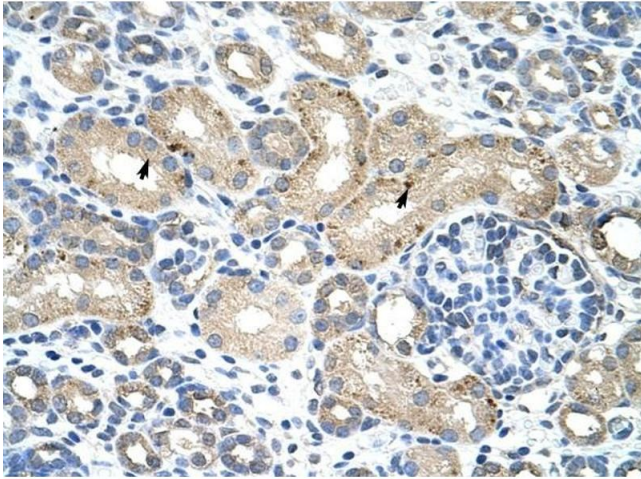
Format:	Lyophilized
Reconstitution:	Lyophilized powder. Add distilled water for a 1 mg/mL concentration of RBM38 antibody in PBS
Concentration:	Lot specific
Buffer:	PBS
Handling Advice:	Avoid repeated freeze/thaw cycles. Dilute only prior to immediate use.
Storage:	4 °C/-20 °C
Storage Comment:	Store at 2-8 °C for short periods. For longer periods of storage, store at -20 °C.

Images



Western Blotting

Image 1. RBM38 antibody used at 0.25 ug/ml to detect target protein.



Immunohistochemistry

Image 2. RBM38 antibody was used for immunohistochemistry at a concentration of 4-8 ug/ml to stain Epithelial cells of renal tubule (arrows) in Human Kidney. Magnification is at 400X