

Datasheet for ABIN633494  
**anti-ADAD2 antibody (C-Term)**



[Go to Product page](#)

1 Image

## Overview

Quantity:	100 µL
Target:	ADAD2
Binding Specificity:	C-Term
Reactivity:	Human
Host:	Rabbit
Clonality:	Polyclonal
Conjugate:	This ADAD2 antibody is un-conjugated
Application:	Western Blotting (WB)

## Product Details

Immunogen:	ADAD2 antibody was raised using the C terminal of ADAD2 corresponding to a region with amino acids TPDTCRGLSLNWSLGDPGIEVVDVATGRVKANAALGPPSRLCKASFLRAF
Specificity:	ADAD2 antibody was raised against the C terminal of ADAD2
Purification:	Affinity purified

## Target Details

Target:	ADAD2
Alternative Name:	ADAD2 ( <a href="#">ADAD2 Products</a> )
Background:	ADAD2 belongs to the ADAD family, and contains 1 A to I editase domain and 1 DRBM (double-stranded RNA-binding) domain. The exact functions of ADAD2 remain unknown.

## Target Details

---

Molecular Weight: 71 kDa (MW of target protein)

## Application Details

---

Application Notes: WB: 0.5 µg/mL  
Optimal conditions should be determined by the investigator.

Comment: ADAD2 Blocking Peptide, catalog no. 33R-9218, is also available for use as a blocking control in assays to test for specificity of this ADAD2 antibody

Restrictions: For Research Use only

## Handling

---

Format: Lyophilized

Reconstitution: Lyophilized powder. Add distilled water for a 1 mg/mL concentration of ADAD2 antibody in PBS

Concentration: Lot specific

Buffer: PBS

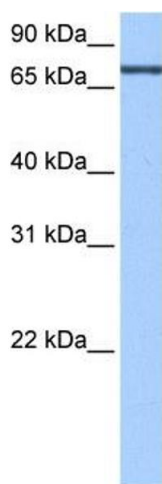
Handling Advice: Avoid repeated freeze/thaw cycles.  
Dilute only prior to immediate use.

Storage: 4 °C/-20 °C

Storage Comment: Store at 2-8 °C for short periods. For longer periods of storage, store at -20 °C.

## Images

---



### Western Blotting

**Image 1.** ADAD2 antibody used at 0.5 ug/ml to detect target protein.