

Datasheet for ABIN633497

anti-CDC5L antibody[Go to Product page](#)**1** Image

Overview

Quantity:	100 µL
Target:	CDC5L
Reactivity:	Human, Mouse, Rat
Host:	Rabbit
Clonality:	Polyclonal
Conjugate:	This CDC5L antibody is un-conjugated
Application:	Western Blotting (WB)

Product Details

Immunogen:	CDC5 L antibody was raised using a synthetic peptide corresponding to a region with amino acids LHWYTGEGMDEMEFTEAESNMNDLVSEYQQYQDATADEQGEFEEEEGEDE
Purification:	Affinity purified

Target Details

Target:	CDC5L
Alternative Name:	CDC5L (CDC5L Products)
Background:	CDC5L shares a significant similarity with Schizosaccharomyces pombe cdc5 gene product, which is a cell cycle regulator important for G2/M transition. CDC5L has been demonstrated to act as a positive regulator of cell cycle G2/M progression. It was also found to be an essential component of a non-snRNA spliceosome, which contains at least five additional protein factors and is required for the second catalytic step of pre-mRNA splicing.

Target Details

Molecular Weight:	92 kDa (MW of target protein)
Pathways:	Activation of Innate immune Response , Chromatin Binding

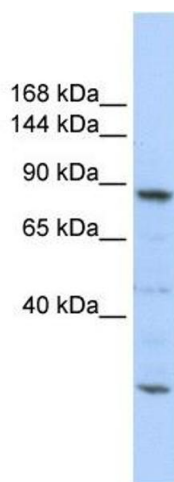
Application Details

Application Notes:	WB: 1 µg/mL Optimal conditions should be determined by the investigator.
Comment:	CDC5L Blocking Peptide, catalog no. 33R-5034, is also available for use as a blocking control in assays to test for specificity of this CDC5L antibody
Restrictions:	For Research Use only

Handling

Format:	Lyophilized
Reconstitution:	Lyophilized powder. Add distilled water for a 1 mg/mL concentration of CDC0 antibody in PBS
Concentration:	Lot specific
Buffer:	PBS
Handling Advice:	Avoid repeated freeze/thaw cycles.
Storage:	4 °C/-20 °C
Storage Comment:	Store at 2-8 °C for short periods. For longer periods of storage, store at -20 °C.

Images



Western Blotting

Image 1. CDC5L antibody used at 1 µg/ml to detect target protein.