

Datasheet for ABIN633509 **anti-RPLP0 antibody (N-Term)**



[Go to Product page](#)

1 Image

Overview

Quantity:	100 µL
Target:	RPLP0
Binding Specificity:	N-Term
Reactivity:	Human, Mouse, Rat
Host:	Rabbit
Clonality:	Polyclonal
Conjugate:	This RPLP0 antibody is un-conjugated
Application:	Western Blotting (WB)

Product Details

Immunogen:	RPLP0 antibody was raised using the N terminal of RPLP0 corresponding to a region with amino acids TEIRDMLLANKVPAARAGAIAPCEVTVPAQNTGLGPEKTSFFQALGITT
Specificity:	RPLP0 antibody was raised against the N terminal of RPLP0
Purification:	Affinity purified

Target Details

Target:	RPLP0
Alternative Name:	RPLP0 (RPLP0 Products)
Background:	Ribosomes, the organelles that catalyze protein synthesis, consist of a small 40S subunit and a large 60S subunit. Together these subunits are composed of 4 RNA species and approximately 80 structurally distinct proteins. The ribosomal protein is a component of the 60S subunit. The

Target Details

protein, which is the functional equivalent of the E. coli L10 ribosomal protein, belongs to the L10P family of ribosomal proteins.

Molecular Weight: 34 kDa (MW of target protein)

Application Details

Application Notes: WB: 0.5 µg/mL
Optimal conditions should be determined by the investigator.

Comment: RPLP0 Blocking Peptide, catalog no. 33R-9044, is also available for use as a blocking control in assays to test for specificity of this RPLP0 antibody

Restrictions: For Research Use only

Handling

Format: Lyophilized

Reconstitution: Lyophilized powder. Add distilled water for a 1 mg/mL concentration of RPLP0 antibody in PBS

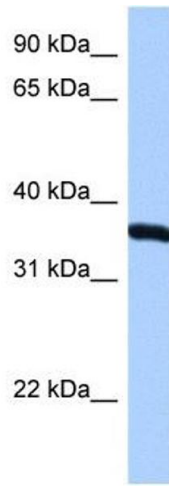
Concentration: Lot specific

Buffer: PBS

Handling Advice: Avoid repeated freeze/thaw cycles.
Dilute only prior to immediate use.

Storage: 4 °C/-20 °C

Storage Comment: Store at 2-8 °C for short periods. For longer periods of storage, store at -20 °C.



Western Blotting

Image 1. RPLP0 antibody used at 0.5 ug/ml to detect target protein.