

Datasheet for ABIN633510
anti-PABPC1L2A antibody



[Go to Product page](#)

1 Image

Overview

Quantity:	100 µL
Target:	PABPC1L2A
Reactivity:	Human
Host:	Rabbit
Clonality:	Polyclonal
Conjugate:	This PABPC1L2A antibody is un-conjugated
Application:	Western Blotting (WB)

Product Details

Immunogen:	PABPC1 L1 antibody was raised using a synthetic peptide corresponding to a region with amino acids NGMFLNYRKIFVGRFKSHKEREARGAWARQSTSADVKDFEEDTDEEATL
Purification:	Affinity purified

Target Details

Target:	PABPC1L2A
Alternative Name:	PABPC1L2A (PABPC1L2A Products)
Background:	PABPC1L2A may be involved in nucleic acid and nucleotide binding
Molecular Weight:	23 kDa (MW of target protein)

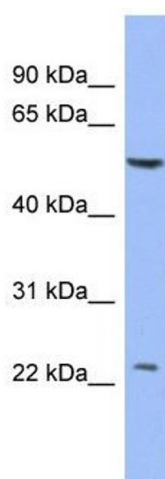
Application Details

Application Notes:	WB: 1 µg/mL Optimal conditions should be determined by the investigator.
Comment:	PABPC1L2A Blocking Peptide, catalog no. 33R-6710, is also available for use as a blocking control in assays to test for specificity of this PABPC1L2A antibody
Restrictions:	For Research Use only

Handling

Format:	Lyophilized
Reconstitution:	Lyophilized powder. Add distilled water for a 1 mg/mL concentration of PABPC0 0 antibody in PBS
Concentration:	Lot specific
Buffer:	PBS
Handling Advice:	Avoid repeated freeze/thaw cycles.
Storage:	4 °C/-20 °C
Storage Comment:	Store at 2-8 °C for short periods. For longer periods of storage, store at -20 °C.

Images



Western Blotting

Image 1. PABPC1L2A antibody used at 1 µg/ml to detect target protein.