

Datasheet for ABIN633538
anti-NOC4L antibody



[Go to Product page](#)

2 Images

Overview

Quantity:	100 µL
Target:	NOC4L
Reactivity:	Human
Host:	Rabbit
Clonality:	Polyclonal
Conjugate:	This NOC4L antibody is un-conjugated
Application:	Western Blotting (WB), Immunohistochemistry (IHC)

Product Details

Immunogen:	NOC4 L antibody was raised using a synthetic peptide corresponding to a region with amino acids CRVLVHRPHGPELDADPYDPGEEDPAQSRALESSLWELQALQRHYHPEVS
Purification:	Affinity purified

Target Details

Target:	NOC4L
Alternative Name:	NOC4L (NOC4L Products)
Background:	NOC4L plays a specific role in biogenesis of 40 S subunit of ribosome.
Molecular Weight:	57 kDa (MW of target protein)

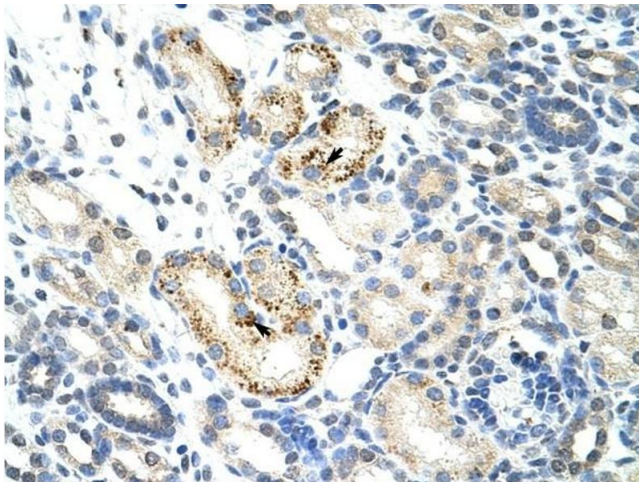
Application Details

Application Notes:	WB: 0.25 µg/mL, IHC: 4-8 µg/mL Optimal conditions should be determined by the investigator.
Comment:	NOC4L Blocking Peptide, catalog no. 33R-1802, is also available for use as a blocking control in assays to test for specificity of this NOC4L antibody
Restrictions:	For Research Use only

Handling

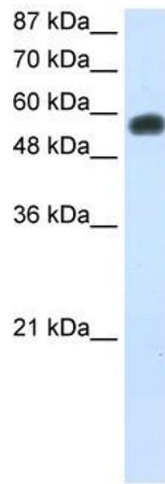
Format:	Lyophilized
Reconstitution:	Lyophilized powder. Add distilled water for a 1 mg/mL concentration of NOC0 antibody in PBS
Concentration:	Lot specific
Buffer:	PBS
Handling Advice:	Avoid repeated freeze/thaw cycles.
Storage:	4 °C/-20 °C
Storage Comment:	Store at 2-8 °C for short periods. For longer periods of storage, store at -20 °C.

Images



Immunohistochemistry

Image 1. NOC4L antibody was used for immunohistochemistry at a concentration of 4-8 ug/ml to stain Epithelial cells of renal tubule (arrows) in Human Kidney. Magnification is at 400X



Western Blotting

Image 2. NOC4L antibody used at 0.25 ug/ml to detect target protein.