

Datasheet for ABIN633539
anti-RBM42 antibody (C-Term)



[Go to Product page](#)

1 Image

Overview

Quantity:	100 µL
Target:	RBM42
Binding Specificity:	C-Term
Reactivity:	Human, Mouse, Rat
Host:	Rabbit
Clonality:	Polyclonal
Conjugate:	This RBM42 antibody is un-conjugated
Application:	Western Blotting (WB)

Product Details

Immunogen:	RBM42 antibody was raised using the C terminal of RBM42 corresponding to a region with amino acids DPSDYVRAMREMNGKYVGSRPIKLRKSMWKDRNLDVVRKKQKEKKLGLR
Specificity:	RBM42 antibody was raised against the C terminal of RBM42
Purification:	Affinity purified

Target Details

Target:	RBM42
Alternative Name:	RBM42 (RBM42 Products)
Background:	RBM42 belongs to the RRM RBM42 family and it contains 1 RRM (RNA recognition motif) domain. The functions of RBM42 remain unknown.

Target Details

Molecular Weight: 50 kDa (MW of target protein)

Application Details

Application Notes: WB: 0.5 µg/mL
Optimal conditions should be determined by the investigator.

Comment: RBM42 Blocking Peptide, catalog no. 33R-2115, is also available for use as a blocking control in assays to test for specificity of this RBM42 antibody

Restrictions: For Research Use only

Handling

Format: Lyophilized

Reconstitution: Lyophilized powder. Add distilled water for a 1 mg/mL concentration of RBM42 antibody in PBS

Concentration: Lot specific

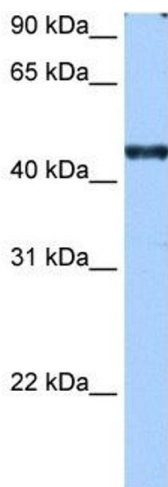
Buffer: PBS

Handling Advice: Avoid repeated freeze/thaw cycles.
Dilute only prior to immediate use.

Storage: 4 °C/-20 °C

Storage Comment: Store at 2-8 °C for short periods. For longer periods of storage, store at -20 °C.

Images



Western Blotting

Image 1. RBM42 antibody used at 0.5 ug/ml to detect target protein.