

Datasheet for ABIN633540
anti-ESRP2 antibody (N-Term)



[Go to Product page](#)

1 Image

Overview

Quantity:	100 µL
Target:	ESRP2
Binding Specificity:	N-Term
Reactivity:	Human, Mouse, Rat
Host:	Rabbit
Clonality:	Polyclonal
Conjugate:	This ESRP2 antibody is un-conjugated
Application:	Western Blotting (WB)

Product Details

Immunogen:	RBM35 B antibody was raised using the N terminal of RBM35 corresponding to a region with amino acids ATAGALGRDLGSDETDLILLVWQVVEPRSRQVGLHKSLVRAEAAALSTQ
Specificity:	RBM35 B antibody was raised against the N terminal of RBM35
Purification:	Affinity purified

Target Details

Target:	ESRP2
Alternative Name:	RBM35B (ESRP2 Products)
Background:	RBM35B contains 3 RRM (RNA recognition motif) domains. ESRP1 and ESRP2 (RBM35B) are epithelial cell-type-specific regulators of FGFR2 splicing.

Target Details

Molecular Weight: 77 kDa (MW of target protein)

Application Details

Application Notes: WB: 1 µg/mL
Optimal conditions should be determined by the investigator.

Comment: RBM35B Blocking Peptide, catalog no. 33R-1548, is also available for use as a blocking control in assays to test for specificity of this RBM35B antibody

Restrictions: For Research Use only

Handling

Format: Lyophilized

Reconstitution: Lyophilized powder. Add distilled water for a 1 mg/mL concentration of RBM30 antibody in PBS

Concentration: Lot specific

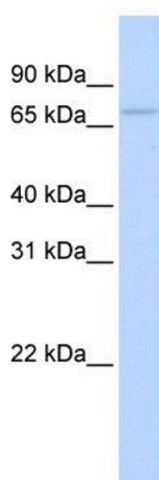
Buffer: PBS

Handling Advice: Avoid repeated freeze/thaw cycles.
Dilute only prior to immediate use.

Storage: 4 °C/-20 °C

Storage Comment: Store at 2-8 °C for short periods. For longer periods of storage, store at -20 °C.

Images



Western Blotting

Image 1. RBM35B antibody used at 1 ug/ml to detect target protein.