

Datasheet for ABIN633541
anti-RPF1 antibody (N-Term)



[Go to Product page](#)

1 Image

Overview

Quantity:	100 µL
Target:	RPF1
Binding Specificity:	N-Term
Reactivity:	Human, Mouse, Rat
Host:	Rabbit
Clonality:	Polyclonal
Conjugate:	This RPF1 antibody is un-conjugated
Application:	Western Blotting (WB)

Product Details

Immunogen:	BXDC5 antibody was raised using the N terminal of BXDC5 corresponding to a region with amino acids AAFFPPGFSISEIKNKQRRHLMFTRWKQQQRKEKLAACKKLLKKEREALGD
Specificity:	BXDC5 antibody was raised against the N terminal of BXDC5
Purification:	Affinity purified

Target Details

Target:	RPF1
Alternative Name:	BXDC5 (RPF1 Products)
Background:	BXDC5 may be required for ribosome biogenesis.
Molecular Weight:	38 kDa (MW of target protein)

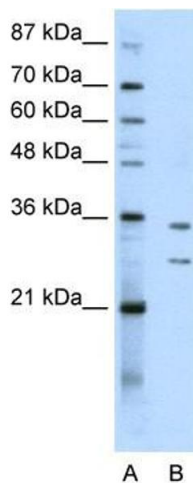
Application Details

Application Notes:	WB: 0.5 µg/mL Optimal conditions should be determined by the investigator.
Comment:	BXDC5 Blocking Peptide, catalog no. 33R-1004, is also available for use as a blocking control in assays to test for specificity of this BXDC5 antibody
Restrictions:	For Research Use only

Handling

Format:	Lyophilized
Reconstitution:	Lyophilized powder. Add distilled water for a 1 mg/mL concentration of BXDC5 antibody in PBS
Concentration:	Lot specific
Buffer:	PBS
Handling Advice:	Avoid repeated freeze/thaw cycles. Dilute only prior to immediate use.
Storage:	4 °C/-20 °C
Storage Comment:	Store at 2-8 °C for short periods. For longer periods of storage, store at -20 °C.

Images



Western Blotting

Image 1. BXDC5 antibody used at 0.5 ug/ml to detect target protein.