

Datasheet for ABIN633548
anti-RG9MTD3 antibody



[Go to Product page](#)

1 Image

Overview

Quantity:	100 µL
Target:	RG9MTD3
Reactivity:	Human, Mouse
Host:	Rabbit
Clonality:	Polyclonal
Conjugate:	This RG9MTD3 antibody is un-conjugated
Application:	Western Blotting (WB)

Product Details

Immunogen:	RG9 MTD3 antibody was raised using a synthetic peptide corresponding to a region with amino acids HALEDVDLNKVVYILGGLVDESIQKKVTFQKAREYSVKARLPIQEYMVRN
Purification:	Affinity purified

Target Details

Target:	RG9MTD3
Alternative Name:	RG9MTD3 (RG9MTD3 Products)
Background:	RG9MTD3 belongs to the RNA methyltransferase trmD family, TRM10 subfamily. It is a probable RNA methyltransferase.
Molecular Weight:	36 kDa (MW of target protein)

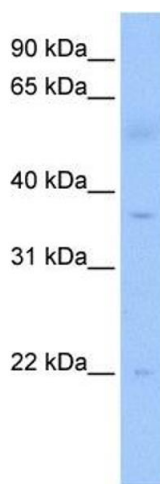
Application Details

Application Notes:	WB: 1 µg/mL Optimal conditions should be determined by the investigator.
Comment:	RG9MTD3 Blocking Peptide, catalog no. 33R-3692, is also available for use as a blocking control in assays to test for specificity of this RG9MTD3 antibody
Restrictions:	For Research Use only

Handling

Format:	Lyophilized
Reconstitution:	Lyophilized powder. Add distilled water for a 1 mg/mL concentration of RG0 TD3 antibody in PBS
Concentration:	Lot specific
Buffer:	PBS
Handling Advice:	Avoid repeated freeze/thaw cycles.
Storage:	4 °C/-20 °C
Storage Comment:	Store at 2-8 °C for short periods. For longer periods of storage, store at -20 °C.

Images



Western Blotting

Image 1. RG9MTD3 antibody used at 1 ug/ml to detect target protein.